

NYM401-1848

SALE NUMBER 68

From Saturday, November 19, to Time of Sale
Weekdays 9 to 5:30 • Sunday and Thanksgiving Day 2 to 5

ENGLISH AND FRENCH FURNITURE

PORCELAINS • PAINTINGS • TEXTILES

TAPESTRIES • IMPORTANT RUGS

DECORATIVE OBJECTS

Property of

MRS HENRY W. AUGUST

Sold by Her Order

Property of the Estate of the Late

MRS C. P. NORCROSS

Sold by Order of Arthur J. Cohen, Attorney

Property of the Estate of

FREDERIC ELLIOTT LEWIS

Sold by Order of the Trustees

AND OTHER OWNERS

Public Sale November 25 and 26 at 2 p. m.



PARKE-BERNET GALLERIES • INC

742 FIFTH AVENUE • NEW YORK • 1938

PRICED CATALOGUES

A priced copy of this catalogue may be
obtained for one dollar for each
session of the sale plus
the cost of the
catalogue

CONDITIONS OF SALE

The property listed in this catalogue will be offered and sold subject to the following terms and conditions:

1. The word "Galleries", wherever used in these Conditions of Sale, means the Parke-Bernet Galleries, Inc.
2. The Galleries has exercised reasonable care to catalogue and describe correctly the property to be sold, but it does not warrant the correctness of description, genuineness, authenticity or condition of said property.
3. Unless otherwise announced by the auctioneer at the time of sale, all bids are to be for a single article even though more than one article is included under a numbered item in the catalogue. If, however, the articles under any one numbered item are designated as a "Lot" then bids are to be for the lot irrespective of the number of articles described in such item.
4. The highest bidder accepted by the auctioneer shall be the buyer. In the event of any dispute between bidders, the auctioneer may, in his discretion, determine who is the successful bidder, and his decision shall be final; or the auctioneer may reoffer and resell the article in dispute.
5. Any bid which is not commensurate with the value of the article offered, or which is merely a nominal or fractional advance over the previous bid, may be rejected by the auctioneer, in his discretion, if in his judgment such bid would be likely to affect the sale injuriously.
6. The name and address of the buyer of each article, or lot, shall be given to the Galleries immediately following the sale thereof, and payment of the whole purchase price, or such part thereof as the Galleries may require, shall be immediately made by the purchaser thereof. If the foregoing condition, or any other applicable condition herein, is not complied with, the sale may, at the option of the Galleries, be cancelled, and the article, or lot, reoffered for sale.
7. Unless the sale is advertised and announced as an unrestricted sale, or a sale without reserve, consignors reserve the right to bid.
8. Except as herein otherwise provided, title will pass to the highest bidder upon the fall of the auctioneer's hammer, and thereafter the property is at the purchaser's sole risk and responsibility.
9. Articles sold and not paid for in full and not taken by noon of the day following the sale may be turned over by the Galleries to a carrier to be delivered to a storehouse for the account and risk of the purchaser, and at his cost. If the purchase price has not been so paid in full, the Galleries may either cancel the sale, and any partial payment already made shall thereupon be forfeited as liquidated damages, or it may resell the same, without notice to the buyer and for his account and risk, and hold him responsible for any deficiency.

10. If for any cause whatsoever any article sold cannot be delivered, or cannot be delivered in as good condition as the same may have been at the time of sale, the sale will be cancelled, and any amount that may have been paid on account of the sale will be returned to the purchaser.

11. In addition to the purchase price, the buyer will be required to pay the New York City sales tax, unless the buyer is exempt from the payment thereof.

12. The Galleries, subject to these Conditions of Sale and to such terms and conditions as it may prescribe, but without charge for its services, will undertake to make bids for responsible parties approved by it. Requests for such bidding must be given with such clearness as to leave no room for misunderstanding as to the amount to be bid and must state the catalogue number of the item and the name or title of the article to be bid on. If bids are to be made on several articles listed as one item in the catalogue, the request should state the amount to be bid on each article, unless the item contains the notation "Lot", in which case the request should state the amount to be bid "For the Lot". The Galleries reserves the right to decline to undertake to make such bids.

13. The Galleries will facilitate the employment of carriers and packers by purchasers but will not be responsible for the acts of such carriers or packers in any respect whatsoever.

14. These Conditions of Sale cannot be altered except in writing by the Galleries or by public announcement by the auctioneer at the time of sale.

SALES CONDUCTED BY HIRAM H. PARKE, OTTO BERNET, AND H. E. RUSSELL, JR

PARKE-BERNET GALLERIES • INC

742 FIFTH AVENUE • NEW YORK

Telephone PLAZA 3-7573

Cable PARKGAL

HIRAM H. PARKE • *President*

OTTO BERNET • *Vice-President*

ARTHUR SWANN • *Vice-President*

ORDER OF SALE

FIRST SESSION


FRIDAY AFTERNOON, NOVEMBER TWENTY-FIFTH

Miniatures and Other Small Bibelots	1- 12
Table Glass	13- 16
Capo di Monte, Paris, Dresden, Copeland and Other Table Porcelains and Figurines	17- 52
Silver and Silver-plated Ware	53- 81
Laces, Textiles and Hangings	82- 92
Paintings	93-116
French Furniture and Decorations	117-173
Oriental Rugs	174-195
French Furniture and Decorations [Concluded]	196-233

SECOND AND LAST SESSION

SATURDAY AFTERNOON, NOVEMBER TWENTY-SIXTH

Chelsea, Derby, Rockingham, Coalport and Other Old Porcelains	234-276
Georgian Silver and Sheffield Plate	277-295
Paintings	296-316
English Furniture and Decorations	317-409
Tapestries	410-414
Important Rugs, Including English and Spanish Hand-tufted Carpets and Kashan Silk Rugs	415-439
English Furniture and Decorations [Concluded]	440-460



Digitized by the Internet Archive
in 2023 with funding from
The Metropolitan Museum of Art

FIRST SESSION

Friday, November 25, 1938, at 2 p. m.

CATALOGUE NUMBERS 1 TO 233 INCLUSIVE

MINIATURES AND OTHER SMALL BIBELOTS

1. THREE DECORATIVE PAINTED ENAMEL BOXES

40-
Jewel box with chased *bronze doré* borders enclosing painted enamel plaques, the cover inset with a watch; circular ormolu box with enamel bust portrait of Cleopatra; and a Canton pink enamel cigarette box. [Lot.] (*August*) *Widths, 4 to 4¾ inches*

2. THREE IVORY MINIATURE PORTRAITS

12-
George Washington, after Gilbert Stuart; Frederick the Great, signed Graff; and girl with spaniel, in the manner of Peters. Framed. (*August*) *Heights, 3¼ to 3¾ inches*

3. EIGHT VIENNESE PAINTED ENAMEL MYTHOLOGICAL MINIATURES

60-
Depicting Diana with her nymphs, the Toilet of Venus, etc.; beaded bronze frames. Together with a *bronze doré* group of putto with dolphin. [Lot.] (*August*) *Widths, 3 to 4¼ inches*

4. EIGHT IVORY MINIATURE PAINTINGS

37-
Lady Hamilton with dog, after Gainsborough; Assumption of the Virgin, after Murillo; three bust portraits of ladies; and three others. Decorative *bronze doré* and tortoise-shell frames, some inset with gems. [Lot.] (*August*)

5. AJOURÉ SILVER BOUDOIR CLOCK

Louis XV Style

35-
Small drum clock set in rococo case, on *ajouré* latticed base; finial figure of Cupid. Substandard. (*August*) *Height, 7¾ inches*

6. SIX DECORATIVE PORCELAIN AND ENAMEL PLAQUES

37-
Three olive-glazed porcelain *bas-reliefs* with mythological figures; Berlin royal blue and gold porcelain plaque with painted head of a girl; and a pair of *bas-reliefs* with female figures. [Lot.] (*August*) *Heights, 7½ to 12¾ inches*

7. FIVE MINIATURE PAINTINGS

70- Set of four on ivory depicting voluptuous nude nymphs, in *bronze doré* frames; and the Lute Player, by E. Crosnier after Ballavoine; framed. [Lot.] (*August*) *Heights, 3½ to 5½ inches*

8. TWELVE FRENCH AND JAPANESE DECORATIVE ENAMEL VASES

80- Including a flaring cinquefoil beaker, a pair of vases painted with eighteenth century beauties, and eight other assorted specimens; and a cloisonné enamel vase with waterfowl amid reeds and flowers. [Lot.] (*August*)

9. NINE CARVED AND DECORATED IVORY ORNAMENTS

35- Japanese tusk vase with green and red lacquer floral decoration; Chinese tusk section with carved genre cartouches; mountain ornament; pair of napkin rings, glove stretcher, box, and tube; and statuette of a singer standing on a wood keg. [Lot.] (*August*)

10. FIVE DECORATIVE MINIATURES

40- Mostly French; in ormolu frames. One in Viennese enamel, and one set with brilliants. [Lot.]

11. VIENNESE ENAMEL, GILDED SILVER AND LAPIS LAZULI SMALL CLOCK

Circa 1840

110- In the form of a pavilion, with two amors holding flowers; richly enameled and jeweled. Together with an East Indian carved horn fan. [Lot.]

12. FIVE DECORATIVE BIBELOTS AND OBJECTS

15- Porcelain trinket box; two Japanese carved ivory figurines; a French painted enamel miniature; and a miniature in ebonized frame. [Lot.] (*Chamberlain*)

TABLE GLASS

13. BRISTOL ETCHED RUBY GLASS LIQUEUR SERVICE

Circa 1830

13- Comprising decanter, seven liqueur glasses, and round tray; etched with foliations. Together with a decorated black lacquer tea caddy of the period. [Lot.]

14. ENGRAVED GLASS TABLE SERVICE

55- Comprising twelve goblets, thirteen champagnes, eleven cocktails, and eleven ports; cut with floral medallions and sprigs, *diamanté*-knopped stem. With a tazza of slightly differing design. [Lot.] (*August*)

15. LOT OF BOHEMIAN ETCHED RUBY GLASS TABLE WARE

Comprising a matched set of a spirit bottle, six liqueurs, pair of sweetmeat jars with covers, and five tumblers, finely etched with rococo trellis cartouches, turrets, animals and birds; pair of decanters etched with grapevines, and a footed bowl with leaf sprays. [Lot.] (August)

16. PAIRPOINT ENGRAVED GLASS TABLE SERVICE

Comprising twenty-four iced tea glasses, twelve tumblers, pitcher and tray, and a flower vase. Engraved with bead festoons joining triple chrysanthemum clusters with long floral pendants. Together with six bubble glass highballs amusingly enameled with animals. [Lot.]

CAPO DI MONTE, PARIS, DRESDEN, COPELAND
AND OTHER TABLE PORCELAINS AND FIGURINES

17. TWELVE SMALL DECORATIVE PORCELAIN AND GLASS ORNAMENTS

Royal Doulton *gros bleu* and gold two-handled urn; two Austrian green, and red and gold urns on plinths; and six other cabinet vases. Two gold-decorated green and blue glass perfume bottles, and a miniature cut glass jar. [Lot.] (August)

18. SEVEN DECORATIVE PORCELAIN FIGURINES

Set of four youthful vendors of fruit, vegetables and rabbits; cherub violin player and dancer; and a Capo di Monte infant Pierrot in gold lace costume. [Lot.] (August)

Heights, 2 to 3 $\frac{3}{8}$ inches

19. FIVE DECORATIVE PORCELAIN ORNAMENTS

Volkstedt green, white and buff krater urn with putto supporter; two Dresden figures of female fruit vendors with baskets; and a pair of female bust figures on *ajouré* bronze bases. [Lot.] (August)

Heights, 5 $\frac{3}{4}$ to 6 $\frac{1}{2}$ inches

20. FOURTEEN LIMOGES GREEN AND GOLD PORCELAIN DESSERT PLATES

With medallion in white centre; jade green border with tooled gold edge. (Hawes)

Diameter, 8 $\frac{1}{2}$ inches

21. FIVE DRESDEN AND BOHEMIAN PORCELAIN STATUETTES

Youthful flute player and dancer; lady in lace-trimmed dress; another in décolleté dress; and Bohemian statuette of a lady. (August)

Heights, 4 $\frac{3}{4}$ to 6 $\frac{1}{2}$ inches

22. SIX COPELAND SPODE PORCELAIN SERVICE PLATES

Decorated with flowers and birds in old Chelsea pattern. (*Chamberlain*)
Diameter, 10¼ inches

15-

23. SIX CAPO DI MONTE AND DRESDEN PORCELAIN STATUETTES

Set of four female figures symbolizing the Four Seasons; and a pair of semi-draped female figures emblematic of Virtue and Innocence. One repaired. (*August*)
Heights, 7½ to 10½ inches

37⁵⁰

24. THREE CAPO DI MONTE PORCELAIN ORNAMENTS

A richly modeled Greek helmet; a triptych depicting an old Paris street scene; and a trinket box. [Lot.]

45-

25. FOUR DRESDEN PORCELAIN AND BISQUE FIGURINES

Lady in white and gold ball dress with fan; ballet dancer in sprigged lace skirt; and a pair of bisque figures of ram and ewe. [Lot.] (*August*)

17⁵⁰

26. SEVENTEEN CHINESE BLUE AND WHITE PORCELAIN 'FITZHUGH' PLATES

Large plate, decorated in cobalt blue in a white ground with Shou medallion, emblems, and flowers.
Diameter, 10 inches

45-

27. TWO PAIRS STAFFORDSHIRE GROUPS

One depicting a Highlander and lady, flanking a fountain with carafes; the others a huntsman with his dog, and Little Red Riding Hood with the wolf.
Heights, 10 to 11 inches

32-

28. PAIR BERLIN LAPIS BLUE AND GOLD PORCELAIN CROCUS POTS

Decorated with medallions of figures in the style of Bartolozzi, in a lapis blue ground with gilded borders.
Height, 11½ inches

25-

29. PAIR DRESDEN PORCELAIN BRACKETS AND TWO GROUPS

Dresden group of a vine-wreathed putto with lioness; nude dryad in sprigged green scarf; and a pair of Dresden latticed brackets with putto support and encrusted with flowers. [Lot.] (*August*)

45-

30. SIXTEEN DRESDEN DECORATED PORCELAIN DINNER PLATES, AND TWELVE DESSERT PLATES

Painted with floral clusters, the dessert plates with fluted and festooned borders. Slight chips. [Lot.] (*August*)
Diameters, 9½ and 8¾ inches

55-

31. TWO PAIRS OLD CANTON DECORATED PORCELAIN PLATTERS

Pair with a version of the willow pattern in blue within a flower festoon and monogrammed border; another pair with flowers and leaves in the Imari taste. [Lot.] *Lengths, 9½ and 12½ inches*

32. TWELVE CAPO DI MONTE DECORATED PORCELAIN ECUELLES, WITH SAUCERS

Two-handled cup and cover, decorated in relief with putti in a Bacchanalian festival, in bright colors; yellow and gold cauliflower finial. (*August*)

[See illustration of two]

33. CAPO DI MONTE DECORATED PORCELAIN SERVICE

Comprising twelve teacups and saucers, and twelve demitasses and saucers. Decoration somewhat similar to the preceding, with nymphs and putti in landscape; twisted green and gold handles. [Lot.] (*August*)

[See illustration of three]

34. DRESDEN DECORATED YELLOW PORCELAIN TEA SERVICE

Comprising a globular teapot, fourteen quatrefoil cups, twelve saucers, and twelve cake plates. Painted with figures of lovers in landscape, and yellow floral panels, separated by white and gold bands. [Lot.] (*August*)

[See illustration of two]



[34]

[34]

[35]

[35]

[35]

AT TOP: NUMBERS 32-33-33-33-32

35. AUSTRIAN DECORATED YELLOW PORCELAIN CABARET

27^{se}
Comprising coffee pot, covered sugar bowl, cream jug, three cups and saucers, and a circular tray. Decoration very similar to the preceding, the pot with shipping scenes; spout repairs. [Lot.] (August)

[See illustration of part]

36. SERVICE OF DRESDEN DECORATED TABLE PORCELAIN

110-
Comprising twelve place plates, with decoration similar to the preceding; thirteen dessert plates and six tall chocolate cups with high saucers, in assorted colors. [Lot.] (August)

[See illustration of one]

37. TWELVE CAPO DI MONTE PORCELAIN SERVICE PLATES

240-
Gilded centre with painted floral cluster, surrounded by wave scrolls; border molded with pairs of sportive amors in colors, with gilded rim. (August) Diameter, 12 $\frac{1}{4}$ inches

[See illustration of one]



[NUMBER 36]

[NUMBER 37]

38. TWELVE CAPO DI MONTE PORCELAIN DESSERT PLATES

110-
Design very similar to the preceding, unglilded; molded border of Lorelei, Venus, mermaids, and other figures. (August) Diameter, 8 $\frac{7}{8}$ inches

Illustration of number 35, on preceding page

39. PAIR DERBY PORCELAIN MONKEY GROUPS

Caricatures of the Arts. A turbaned monkey sculpturing a bust, another painting a landscape. *Height, about 7 inches*

40. LIMOGES HAND-PAINTED PORCELAIN FISH SERVICE

Comprising twelve plates, sauce boat with stand, and an oval platter. Painted with fish in a marine landscape; shell-fluted and scalloped white and gold border. [Lot.] (*August*) *Length of platter, 23½ inches*

41. VIEUX PARIS DECORATED PORCELAIN DINNER SERVICE

Comprising an octagonal soup tureen and cover; pair octagonal entree dishes and covers; sauce tureen and cover; sauceboat and stand; pair low compotes; pair small oblong dishes; seven platters graduated in size; twenty-three entree plates; fourteen soup plates; seven dessert plates; seven small plates; set of egg cups on stand. Painted with posies of flowers and leaves in a white ground with apricot border gilded with leaf sprays. [Lot.] (*N. Y. Private Collector*)

[See illustration of part]



[NUMBER 41]

- 200- 42. VIEUX PARIS DECORATED PORCELAIN DINNER SERVICE
 Matching the preceding. Comprising oblong soup tureen with cover;
 entree dish and cover; sauce boat and stand; sauce tureen and cover;
 pair low compotes; eight graduated platters; twelve soup plates; twenty-
 three entree plates; seven small plates; seven dessert plates. [Lot.]
 (N. Y. Private Collector)

- 17⁵⁰ 43. ELEVEN CROWN DERBY DECORATED PORCELAIN PLATES
 Shaped plate, the centre with an armorial crest and motto: *Pax in Bello*.
 [Lot.] *Diameter, 9¾ inches*

- 7⁵⁰ 44. PAIR STAFFORDSHIRE POLYCHROME FIGURES OF DOGS
 Terrier dogs seated on their haunches, wearing straw hat and bonnet.
Heights, 13 and 14 inches

- 15- 45. OLD CANTON DECORATED PORCELAIN PUNCH BOWL
 Richly decorated in colors and gold with panels of Chinese figures in
 pavilions, alternating with panels of flowers. *Diameter, 15 inches*

- 30- 46. PAIR STAFFORDSHIRE DECORATED PORCELAIN BEAKER VASES
Oriental Lowestoft Style
 Decorated with groups of Chinese figures and pavilions in shaped reserves
 in *rouge de fer* and gold diaper pattern ground. *Height, 12 inches*

- 50- 47. PAIR WEDGWOOD BLUE AND WHITE JASPER VASES, A CANDLESTICK,
 AND A PEN TRAY
 Small urn on circular plinth, decorated with putti in white relief. Cham-
 ber candlestick and a small oblong tray, similar. One piece repaired.
 [Lot.] (*Norcross*)

- 15- 48. SET OF TWELVE VIEUX PARIS DESSERT PLATES AND
 TWO COMPOTIERS
 With white centre, apricot and gold border, in a pleasing Empire de-
 sign. By Edouard Honoré, Paris. *Diameter, 8½ inches*

- 45- 49. PAIR VIEUX PARIS EMPIRE PORCELAIN COMPOTIERS
 Formed of three bisque figures of winged caryatids supporting a basket
 pattern bowl, and standing on a gilded stepped circular plinth.
Height, 17 inches

50. SET OF TWELVE DECORATED PORCELAIN SERVICE PLATES

Crown Derby Style

27^{1/2} Finely decorated in *rouge de fer*, blue, and gold, with flowers and leaves in the Oriental taste. [Lot.]

Diameter, 9½ inches

51. LOT OF DRESDEN DECORATED TABLE PORCELAINS

25- Comprising eleven quatrefoil teacups and twelve saucers, twelve demitasses and saucers, eight bread-and-butter plates, and twelve berry plates. With floral decoration in colors, and gilded ornament. One repaired.

[Lot.] (*August*)

52. LOT OF DECORATIVE TABLE PORCELAINS

27^{1/2} Set of eighteen Dresden place cards; cigarette holder on tray base; open-work sweetmeat dish; cartouche-shaped stamp box; four playing card counters; Wedgwood blue and white jasper box; and four miniature figurines. [Lot.] (*August*)

SILVER AND SILVER-PLATED WARE

53. EIGHT CONTINENTAL SILVER TOYS

30- Two Dutch silver windmills, a leaf-shaped tripod patch box, nef, cupid chariot, French silver swing, *canapé*, and a two-handled covered urn. Together with a Viennese gilded bronze and enamel chair, and another piece. [Lot.] (*August*)

54. TWENTY-EIGHT SILVER AND ENAMEL SPOONS

85- Twelve Russian spoons with arabesque design in colors; twelve in sterling silver enriched with lapis blue enamel; four in translucent enamel. Together with a small tray with intricate arabesque pattern in colors. [Lot.] (*August*)

55. CHASED STERLING SILVER SERVICE OF FLATWARE

The Stieff Co., Baltimore

175- Comprising twelve each of bouillon spoons, salad forks, grape-fruit spoons, teaspoons, coffee spoons, steel-bladed dinner knives, forks, berry spoons, butter spreaders, demitasse spoons, ice cream forks; sixteen assorted serving implements and a crumb set. Richly chased with rose pattern, and initialed A. Some servers of slightly differing design. [Lot.] (*August*)

- 32¹² 56. LOT OF STERLING SILVER TABLE WARE
Set of two chased pepper shakers and two salts with spoons; three-piece carving set, seven assorted servers, and five spirit decanter labels. Some monogrammed. [Lot.] (August)
- 40- 57. SIX DECORATIVE SILVER TABLE ARTICLES
English silver sauce boat, sugar scuttle with pearl-handled scoop, pair of pyriform muffineers, heart-shaped shell dish, and a Tiffany bud vase. Some monogrammed. [Lot.] (August)
- 27¹⁶ 58. FOUR ENGLISH AND CONTINENTAL SILVER TABLE ARTICLES
Octagonal bowl engraved with allegorical figures; flat-chased tumbler inset with Prussian silver coins; Louis XV *repoussé* silver sauce boat with griffin handle; and a *repoussé* mug. [Lot.] (August)
- 37¹² 59. SEVEN DECORATIVE SILVER TABLE ARTICLES
Pair of oyster shell sweetmeat bowls; *repoussé* porringer, toilet jar, powder box with silver-mounted puff, and octofoil bowl with four dragon-scroll supports; and a small nut dish. [Lot.] (August)
- 72- 60. TWELVE STERLING SILVER FRUIT PLATES
Bailey, Banks & Biddle Co., Philadelphia
Pierced border molded with interlacing branches of iris. (August)
Diameter, 7¾ inches
- 55- 61. THREE STERLING SILVER TABLE ARTICLES
Tiffany wire-pattern fruit bowl with border of strawberry vines engraved coin silver circular tray; and butter dish with shell-scrolled supports and cow finial. [Lot.] (August)
Diameter of bowl, 11 inches; of tray, 10 inches
- 22¹⁶ 62. STERLING SILVER CHOCOLATE POT *Black, Starr & Frost, New York*
Tapering cylindrical pot of plain silver, with hinged cover, and ebony peg handle. (August) *Height, 8½ inches*
- 27¹⁶ 63. STERLING SILVER SPIRIT FLASK, COCKTAIL SHAKER AND ICE BOWL
Two-pint flask and tapering cylindrical shaker in plain silver; glass bowl mounted in silver frame. [Lot.] (August)



[NUMBER 64]

- 165- 64. REPOUSSÉ SILVER TEA AND COFFEE SERVICE *London, 1852 and 1865*
Comprising a pear-shaped coffee pot by E. & J. Barnard, 1852, and
teapot, two-handled sugar bowl and cream jug, to match. Lobed bodies
repoussé with floral pendants and rococo scrolls; leaved handles. [Lot.]

[See illustration]

- 60- 65. SIX STERLING SILVER TABLE ARTICLES
English silver two-handled sugar bowl and tripod creamer; three small
salvers with beaded rims; and a christening cup. [Lot.] (*August*)

- 62- 66. STERLING SILVER PITCHER AND TWO VASES
The Gorham Co., New York
Pitcher with chased design of chrysanthemum, peony and iris branches
enhanced with colored enamels; valanced vase *repoussé* with vertical
scrolls; and tall spiraled octagonal vase on foot, monogrammed. [Lot.]
(*August*)

Heights, 7, 10 and 14¾ inches

67. FIVE STERLING SILVER TABLE ARTICLES

65- Pair Crichton sweetmeat baskets with lattice-pierced border festooned with drapery; oval bread tray; Gorham butter dish with cover; and a sauce boat with gadroon ornament. Some monogrammed. [Lot.] (August)

68. THREE STERLING SILVER BOWLS

32- Two-handled lobed oval fruit bowl with *ajouré* lattice border; round bowl with richly molded border of roses; and a valanced sweetmeat bowl *ajouré* with trellis cartouches and foliations. Monogrammed. [Lot.] (August) Widths, $7\frac{1}{4}$ to $14\frac{1}{4}$ inches

69. THREE SILVER-MOUNTED GLASS DECANTERS AND A SWEETMEAT BOWL

20- Pinched spirit bottle mounted in *ajouré* English silver; emerald glass and silver deposit liqueur jug; etched and paneled glass decanter; and a small bowl on silver support. [Lot.] (August)

70. STERLING SILVER FLOWER BOWL

45- Bell-shaped bowl of fine plain silver. (August) *Tiffany & Co., New York*
Diameter, 9 inches

71. PAIR SILVER-PLATED CHOP DISHES, AND A MUFFIN DISH

62- Gadrooned round dish with hot water compartment and liner, the cover with engraved cartouche initialed A, and melon finial; shell-lobed folding dish in trestle frame. [Lot.] (August)
Diameter of chop dish, 11 inches

72. CHASED SILVER TWO-HANDLED HOT WATER URN WITH STAND

82- Bulbous pear-shaped urn with beaded cover and angular handles; chased with foliations on granulated bands; upon the spigot a finial figure of a girl with goblet; on four-legged stand with spirit burner. Initialed H. (August) *George Sharp, Philadelphia*
Total height, 17 inches

73. PAIR SILVER FOUR-LIGHT CANDELABRA

150- Knopped shaft on lobed foot, with three leaf-scrolled twisted arms and central *bobèche*; molded with foliations and rocaille motives. (August) *Thos. Bradbury & Sons, Sheffield, 1900*
Height, 22 inches

74. SILVER-PLATED TREFOIL CHAFING DISH WITH COVER

55- With compartmented liner and baluster handle. (August)
Length, 17 inches

- 4250
75. FRENCH SILVER FRUIT BOWL, AND A SILVER-PLATED HUMIDOR
Oval latticed bowl *repoussé* with a romantic pastorage; cedar-lined silver-plated box chased with rococo foliations. Together with a glass-lined cigarette box and a decorative frame. [Lot.] (*August*)

- 60-
76. SILVER-PLATED TWO-HANDLED TEA TRAY
Engraved oblong tray with molded border of grapevines, and two leaf-scrolled handles. (*August*) *Length, 31¾ inches*

- 80-
77. PAIR SILVER-PLATED TWO-HANDLED VASE LAMPS, AND PAIR VASES
Vases elaborately molded with angel groups, putti and other Renaissance ornament, on four scrolled mascarons supports; fitted for electricity, with damask shades. Pair of tall *repoussé* hexagonal vases. [Lot.] (*August*)
Heights, 33½ and 23½ inches

- 15-
78. FIVE CHASED SILVER ARTICLES
Comprising two soup ladles; two small oblong trays; and a shaped mug. Some pieces inscribed and monogrammed. [Lot.] (*Chamberlain*)

- 17-
79. TWO SILVER-PLATED PLATTERS
Oval platter with gadrooned rim in the Georgian taste; and Reed and Barton well-and-tree platter with hammered border, monogrammed. [Lot.] (*August*) *Lengths 20 and 18 inches*

- 30-
80. FIVE DECORATIVE SHEFFIELD AND SILVER-PLATED TABLE ARTICLES
Covered vegetable dish with molded grapevine border; salver with scrolled and reeded rim; pair of Georgian Sheffield plate gadrooned coasters; and engraved oval humidor with affixed stand. [Lot.] (*August*)

- 20-
81. LOT OF SILVER-PLATED TABLE ARTICLES
A chased circular salver on four feet; a vegetable dish and cover; a cake basket; and a chased sauce boat. Some pieces monogrammed. [Lot.] (*Chamberlain*)

LACES, TEXTILES AND HANGINGS

82. CROCHETED LACE TABLECLOTH

60- Developing a pattern of wheellike floral medallions forming a trellis, joined by small rectangles. *Length, 3 yards 3 inches; width, 2 yards*

83. EMBROIDERED AND DRAWNWORK LINEN LUNCHEON CLOTH AND TWELVE NAPKINS

40- With drawnwork floral medallions and embroidered cartouches depicting figures dancing around a maypole. [Lot.] (*August*)
Length of cloth, 2 yards 21 inches; width, 2 yards

84. TURKISH SILVER-EMBROIDERED GOLDEN YELLOW VELVET COVERLET

30- In heavy plush velvet, tapestry-worked in silver and colored silks with a medallion and border of pomegranates and melons, encircled by scrolling leafage. (*August*) *Length, 8 feet 5 inches; width, 5 feet 6 inches*

85. SUMPTUOUSLY EMBROIDERED BALDACCHINO HANGING

Florentine, Early XVII Century

45- The centre panel presenting a design of baroque ornament consisting of foliage volutes, human masks, and cartouches executed in crimson silk laidwork embroidery; framed in a wide border filled with magnificent foliage, fruits, and flowers in colored silk and bullion embroidery. Mounted on a foundation of crimson velvet of somewhat later date.

Height, 12 feet 2 inches; width, 7 feet 4 inches

86. PAIR PURPLE DAMASK AND DRAP D'OR APPLIQUÉ EMBROIDERY HANGINGS

Portuguese Baroque

40- Appliqué in glittering cloth of gold on a purple silk damask ground to a voided design of huge leaf palmettes supporting pairs of pointed leaves and pomegranates. *Length, 10 feet 2 inches; width, 3 feet 6 inches*

87. THREE PAIRS GREEN CUT VELOURS WINDOW HANGINGS

30- Interlined, and variously lined with green and amber sateen. [Lot.] (*Lewis Estate*)
Length, 7 feet; width, 4 feet

88. THREE PAIRS GREEN SILK VELOURS WINDOW HANGINGS

17^{1/2} Interlined, and variously lined and enriched with appliqué bullion embroidery in the Louis XIII style. [Lot.] (*Lewis Estate*)

Height, 6 feet 9 inches; width, 4 feet 9 inches

Height, 7 feet; width, 39 inches

89. FOUR PAIRS OLIVE GREEN BROCATELLE WINDOW HANGINGS

32^{1/2} Lined with green and white sateen. [Lot.] (*Lewis Estate*)

Height, 7 feet 2 inches; lengths, 6 feet and 8 feet

90. PAIR BLUE AND IVORY SILK LAMPAS WINDOW HANGINGS, AND
FOUR CHAIR SEATS
Patterned with flower festoons and jardinieres, in the Georgian taste.
712 [Lot.] (*Norcross*)
Hangings: Length, 6 feet 2 inches; width, 22½ inches
91. THREE PAIRS WINDOW HANGINGS
Two pairs in old gold plush velvet; and a pair in celadon silk rep with
115- white *ajouré* border and matching valance. With two bullion bell
ropes. [Lot.] (*August*)
Length, 7 feet 6 inches; widths, 47 and 52 inches
92. FIVE DECORATIVE ANTIQUE TEXTILES *XVII-XVIII Century*
Mostly Spanish, including a green silk brocade and *drap d'or* chasuble;
57E flowered white silk brocade chasuble with gold lace galloon; a silk-
embroidered *drap d'or* and *d'argent* hanging with silver galloon; a *drap*
d'or hanging with rich floral design in silver and embroidery, with gold
galloon; and a gold-embroidered crimson velvet table runner. [Lot.]

PAINTINGS

93. BAVARIAN GENRE SCENES: TWO PAINTINGS
25- *C. Ostersetzer, German: fl. 1875*
Rustic interiors, one with a Bavarian couple dancing, the other, a post-
man bringing a letter. Signed and dated *München '76*.
Panel: Height, 10¼ inches; width, 8 inches
- 93A. VENETIAN CANAL SCENE *Rubens Santoro, Italian: b.1843*
30- Intersecting canals, bordered by palaces and a garden, with an arched
bridge in the distance; ladies land from a gondola upon the grassy quay
at right. Signed. (*Lewis Estate*)
Panel: Height, 13 inches; width, 9¼ inches
94. RIVER LANDSCAPES: TWO PAINTINGS
10- Broad river with cattle wading, and figures on the bank, by Wm. M.
Hart, N.A., signed and dated '72; and the rapids of a stream, with
mountains in the distance, by Jarvis McEntee, N.A., signed with mono-
gram. [Lot.] (*E. M. Bratter, Attorney*)
95. MOONLIGHT *Elliott Daingerfeld, N.A., American: 1859-1932*
15- A full moon rising above a dark horizon and lighting the rapids of a
stream, with a fisherman casting from a boulder at right. Signed.
(*E. M. Bratter, Attorney*) *Height, 8½ inches; length, 11½ inches*

95A. SHEEP *Thos. Sidney Cooper, R.A., British: 1803-1902*

Five sheep, one standing, upon a grassy slope; before a distant expanse of pasturelands, storm clouds gathering in the sky. Signed. (*Lewis Estate*)

On board: Height, 10 inches; length, 14 inches

96. MOUNTAIN LANDSCAPE *George Inness, N.A., American: 1825-1894*

Sloping green foreground overlooking fruit trees and a valley enclosed by high mountains in the distance. Signed. (*E. M. Bratter, Attorney*)

Height, 12 inches; length, 18½ inches

97. AFTER THE STORM *J. Francis Murphy, N.A., American: 1853-1921*

A patch of sunlight falling upon a narrow stream winding through a broad green meadow which two figures are crossing; the spire of a church stands out on a distant hill. Signed. (*E. M. Bratter, Attorney*)

Height, 12 inches; length 18 inches

Collection of Newman E. Montross, New York, 1933

97A. PORTRAIT OF A GIRL IN LEGHORN HAT

George L. Seymour, British: fl. 1875

Bust-length figure to the left, the face turned toward the observer; wearing a diaphanous white jacket and leghorn hat with violets. (*Lewis Estate*)

Height, 17½ inches; width, 11¾ inches

98. RIVER LANDSCAPE: EVENING

George Inness, N.A., American: 1825-1894

Mellow light of evening on a winding river, with a boy in red blouse rowing near a wooded shore; cows wading in the foreground. As exhibited.

Height, 16 inches; length, 24 inches

99. HAPPY HOURS *William H. Lippincott, N.A., American: 1849-1920*

An interior with a little girl at an upright piano, and two children on the floor playing with kittens about a plate of milk. Signed, and dated 1884.

Panel: Height, 15¾ inches; length, 20 inches

100. TWO DECORATIVE PAINTINGS

Head and shoulders figure of a young girl before a yellow ground, signed G. Costa; and Italian peasant mother nursing her child, by Edwin Long, R.A., and dated 1864. (*August*)

101. VENICE

Antonio Reyna, Spanish: fl. 1911

View of Venice with the S. Maria della Salute at the right; two *bragazzi* with colored sails moored at the left. Signed.

Height, 13¾ inches; length, 29½ inches



[NUMBER 102]

102. INDIAN GUARDSMAN *Rodolphe Ernst, Austrian: b.1854*
 Interior of a palace, with the colorful figure of an Indian in a *kalemkari*, holding a sword and leaning against a recumbent Bengal tiger. Signed.
Cradled panel: Height, 16 inches; length, 24 inches

[See illustration]

103. SHEEP IN PASTURE *Edward Gay, N.A., American: 1837-1928*
 A flock of sheep by a group of fruit trees in blossom, before a wide expanse of meadowland with grazing cattle. Signed.
Height, 17 inches; length, 27¼ inches

- 103A. SNOW SCENE *Charles Foster, American: 1850-1931*
 Snow-covered fields enclosed in the middle distance by low woods, and bounded by a fence bordered by two bare trees. Sunset sky. Signed.
 (*Lewis Estate*) *Height, 29 inches; width, 22 inches*

104. CIRCUS TROUPE *Vincente de Paredes, Spanish: fl. 1900*
 Interior of a circus tent with a girl on a white horse at the left, a clown and ballerina before a mirror at right, and two jongleurs. Signed.
Height, 26½ inches; length, 36¼ inches

40- 105. SHADOWS *Wm. Merritt Chase, N.A., American: 1849-1916*
View of a grassy plot, bordered in the middle distance by the smoking chimneys of a manufacturing town, the foreground in shadow. Signed. (*E. M. Bratter, Attorney*) *Height, 19½ inches; length, 24¼ inches*
Collection of John J. Campbell, New York, 1935

40- 106. VENICE *J. Salt, British: XIX Century*
Depicting feluccas and a gondola on a canal in the dawn light. Signed. (*August*) *Height, 18½ inches; length, 32 inches*

190- 107. VIEWS OF AMALFI: TWO PAINTINGS *Franz Richard Unterberger, Swiss: fl. 1875*
Terraces with figures of women in native costume, and the monastery with a monk seated in the foreground; overlooking the blue Mediterranean at the right. Both signed.
Height, 32½ inches; width, 28 inches

37½ 108. A REPAST *Hendrik Valkenburg, Dutch: 1826-1896*
Seven figures of peasants seated around a table in a high beamed spacious interior; a basket with vegetables scattered over the floor at left. Signed.
Height, 25 inches; length, 33 inches

27½ 109. NEAR KINGSTON, NEW YORK: WINTER EVENING *Walter Koeniger, American: b.1881*
Snow-covered bare country traversed by a river reflecting a turquoise sky, with farm buildings on the farther shore. Signed, and dated '15.
Height, 29½ inches; length, 35½ inches

25- 110. DECORATIVE LANDSCAPE PAINTING
English rustic scene with cottages, cows wading in a stream, and a man punting a skiff. (*August*) *Height, 44½ inches; width, 35 inches*

27½ 111. THE HELPER *Georges Jean Haquette, French: 1854-1906*
A fishing dory with a fisherman pulling at an oar, and a child in a blue frock reaching to help; blue sea with sailing vessels beyond. Signed.
Height, 21½ inches; length, 29 inches

110- 112. GRANDMOTHER'S BIRTHDAY *Lanfant de Metz, French: 1814-1892*
Depicting six children each bearing gifts to a cottage door, the grandmother seen within with a distaff. Vista of blue sea at left. Signed.
Height, 25½ inches; length, 32 inches

113. CLEOPATRA *After Guido Reni*
 Three-quarter figure in loose brown and white draperies, applying the
 asp to her breast. (*August*)

Height, 48 inches; width, 38 inches

114. FROU FROU *George Jules Clairin, French: 1843-1919*
 White tulle ruffles, silks, and bows, assisting histrionic ability; depicted
 at full-length before a paneled interior. Signed.

Height, 59½ inches; width, 35¼ inches

115. THREE SMALL DECORATIVE PAINTINGS
 Interior with figure of a lady reading, signed L. Bayler; nude reclining,
 signed M. Mousset; and Venus and cupids, in the manner of William
 Etty, R.A. [Lot.] (*August*)

116. THREE DECORATIVE PICTURES
 Ruth the Gleaner, painting on porcelain signed Ch. Landelle; Kermesse,
 watercolor after David Teniers the Younger; and a small Italian
 mosaic picture of a peasant woman. [Lot.] (*August*)

FRENCH FURNITURE AND DECORATIONS

117. MEZZOTINT PRINTED IN COLORS
T. Hamilton Crawford, after Gainsborough
 Blue Boy. Large folio, signed artist's proof; brilliant impression.
 Framed.

118. SMALL MARBLE AND BRONZE INKSTAND, AND A SILVER TEAPOT
 Inkstand in Louis XVI style, embellished with amor figurine. Small
 silver teapot by Ball, Tompkins & Black, New York; the latter mono-
 grammed. [Lot.] (*Chamberlain*)

119. FOUR TIBETAN AND CHINESE BRONZE BUDDHISTIC STATUETTES
 Gilded bronze figure of Buddha and of Kuan Yin. Two dark bronze
 seated figures of Bodhisattvas, probably Ming.

Heights, 7 and 9 inches

120. CARVED SOOCHOW GREEN JADE STATUETTE OF KUAN YIN
 Holding a flywhisk and peach; in mottled 'soft' green jade. Foot imper-
 fect. Has stand. (*August*)

Height, 13 inches

121. DRESDEN PORCELAIN MUSICAL GROUP MOUNTED AS LAMP

Louis XVI Style

155- Orchestral group of four figures in eighteenth century costumes, with piano, violin and 'cello; on white and gold fluted base. Fitted for electricity, with silk shade. (*August*) *Height, 26 inches*

122. BRONZE GROUP

Henri Perrot, French: XIX Century

121^{te} La Maternelle. A semi-draped young mother embracing her infant child, seated upon a rock. Signed PERNOT, and with stamp of the *fondeur*. (*Chamberlain*) *Height, 18 inches*

123. STATUARY MARBLE AND BRONZE DORÉ CLOCK GARNITURE

Louis XVI Style

50- Festooned drum clock by Caldwell & Co., set in portico with urn finials; and pair of four-light putto candelabra; beaded plinths appliqué with ormolu trophies and leafage. [Lot.] (*August*)

Heights, 18 and 17 inches

[See illustration]

124. TWO DECORATIVE PORCELAIN LAMPS AND AN URN

30- Decorated *gros bleu* and gold ovoid vase, and figure of a lady in lace dress, with a parrot; fitted for electricity, with shades; and a covered urn painted with nymph and amors, mounted in *bronze doré*. [Lot.] (*August*) *Heights, 16 to 28½ inches*

125. PAIR SCULPTURED WHITE MARBLE STATUETTES

French, XIX Century

20- Winged amors emblematic of music. (*Chamberlain*)

Height, 15 inches

[See illustration]

126. DRESDEN DECORATED PORCELAIN URN, MOUNTED AS LAMP

40- Bulbous vase painted with a group of backgammon players, and of lovers surprised; base repaired. Encrusted with clusters of flowers with two seated female figures. Fitted for electricity, with silk shade. (*August*)

Height, 37 inches

127. EMPIRE BRONZE DORÉ CLOCK

Circa 1810

121^{te} Formed as a figure of a shepherdess, her hand clasping a tree trunk bearing a felicitous legend. Dial inscribed: CHASTE, A AMSTERDAM.

Height, 19 inches

Illustration of number 123, facing page 38; of number 125, facing page 87

- 11- 128. PAIR BRONZE DORÉ CANDELABRA *Louis XV Style*
After Meissonier, with foliated scrolled branches on shaped stem and
base; wired for six lights. *Height, 24 inches*
- 20- 129. STATUARY MARBLE AND BRONZE MANTEL CLOCK,
MOUNTED IN BRONZE DORÉ *Louis XVI Style*
Incurvate marble plinth ornamented with gilded bronze vines and inset
with clock wired for electricity; surmounted by a bronze group of a
Bacchante and musical putto. (*August*) *Height, 19½ inches*
- 17- 130. FIVE DECORATIVE FRAMED ENGRAVINGS
Classical figure groups and children, in stipple and colors; small folios.
After Bartolozzi, Cipriani, and Angelica Kauffman. [Lot.] (*Norcross*)
- 12- 131. PARIS DECORATED PORCELAIN BRANCH-HANDLED VASE *Circa 1850*
Painted with a nosegay of blossoms in colors, with royal blue and gold
fluted rim; two green and gold descending oak branches as handles.
Height, 19 inches
- 15- 132. BRONZE STATUETTE OF TERPSICHORE
Gustave-Friederic Michel, French: XIX Century
Voluminously draped girl wearing laurel wreath, holding an antique
zither. Signed: G. MICHEL. *Height, 35 inches*
- 200- 133. DRESDEN PORCELAIN WALL MIRROR ENCRUSTED WITH FLOWERS
Cartouche-shaped mirror with elaborate rococo frame of encrusted
foliations with perched canaries and amors, with mirror and bouquet
cresting. (*August*) *Height, 53 inches; width, 36 inches*
- 125- 134. BRONZE STATUETTE AND A TABLE LAMP
Bronze statuette of Pan, signed J. SANSON, ROMA. Silver-plated vasi-
form table lamp wired for two lights. [Lot.] (*Wadsworth*)
Heights, 27½ and 29½ inches
- 25- 135. CUT GLASS AND GILDED BRASS TABLE LAMP *Empire Style*
Star-cut glass composite column supporting bulbous reservoir; brass
capital and paw feet. Fitted for electricity, with silk shade. (*August*)
Height, 41 inches

- 20- 136. BRONZE BUST OF NAPOLEON *R. Colombo, Italian: fl. 1885*
 Wearing greatcoat and bicorn hat, on base modeled with a spread eagle.
 Signed, and dated 1885. *Brèche rouge* marble plinth.

Height of bust, 22 inches

- 30- 137. TWO TABLE LAMPS
 Carved and gilded Italian baroque *torchère* wired for two lights. Bac-
 carat glass columnar lamp, also wired for two lights. (*Wadsworth*)

Heights, 34 and 38 inches

- 15- 138. BOULLE BRACKET CLOCK *Louis XV Style*
 Cartouche-shaped case of black lacquer inlaid with mother of pearl
 and brass, and richly mounted in gilded bronze. (*Chamberlain*)

Height, 18 inches

- 25- 139. PAIR GILDED BRONZE CHENETS *Louis XV Style*
 Formed as figures of wild boar and stag, surmounting rocaille-scroll
 plinth. (*Lewis*)

Height, 14 inches

- 60- 140. PAIR BRASS AND BACCARAT CRYSTAL LUSTRE CANDELABRA *Louis XVI Style*

Knopped and fluted glass shaft with steeple finial, in brass tripod frame
 with three *bobèches*. Lavishly hung with faceted beads and graduated
 spheres, from amethyst rosettes. Fitted for electricity. (*August*)

Height, 25 inches

- 55- 141. PAIR DRESDEN PORCELAIN GROUPS, MOUNTED AS LAMPS
 Venus and Cupid, and Diana with putto, respectively, on rocaille white
 and gold base. Fitted for electricity, with shades. (*August*)

Height, 24 inches

- 210- 142. SET OF FOUR BRONZE DORÉ AND CRYSTAL WALL SCONCES *Louis XVI Style*

Putto with twin dolphin tail entwined with two leaved branches, and
 supporting upon his head a latticed basket of crystal fruit. Fitted for
 electricity. Together with a fan-shaped fire screen and a pair of door
 stops. [Lot.] (*August*)

Height, about 30 inches

- 25- 143. BRONZE GROUP *After Giovanni da Bologna*
 Rape of the Sabines, after the group in the Loggia dei Lanzi, Florence.
 On *vert antique* marble plinth inset with bronze plaque of the same
 subject. (*August*)

Height of group, 24½ inches

- 65- 144. PAIR PORCELAIN GROUPS, MOUNTED AS LAMPS
Each with nude figure of a nymph partly draped in a diaphanous scarf, and with putto, on festooned plinth. Fitted for electricity, with shades. Putto finials chipped. (*August*) *Height, 33½ inches*
- 65- 145. DRESDEN PORCELAIN VASE, MOUNTED AS LAMP
Molded with a volcano in eruption, and animals fleeing a flaming forest, and with two male figures, one holding a torch, the other bellows. Fitted for electricity, with fringed silk damask shade. Putto finial repaired. (*August*) *Height, 37½ inches*
- 40- 146. TWO BRONZE KRATER-FORM EWER ORNAMENTS
Italian Renaissance Style
One modeled with Tritons, Venus Anadyomene, dolphins, and putti, serpent-entwined handle; the other with Bacchanalian nymphs and putti, a satyr upon the shoulder. Together with a pair of wrought iron S-scrolled andirons. [Lot.] (*August*) *Height, 19½ inches*
- 50- 147. VENETIAN TINTED GLASS CHANDELIER
In aquamarine glass, in the form of a cluster of curving stems of blossoms, tinted pink, green, yellow and lapis blue. Small repairs. (*August*) *Diameter, 29 inches*
- 190- 148. PAIR DRESDEN DECORATED PORCELAIN GUERIDONS
Knopped column supporting a liliform top, on leaf-voluted tripod. Tinted in pastel shades and painted with floral nosegays, encrusted with blossoms, and embellished with figures of putti. (*August*) *Height, 48 inches*
- 35- 149. TULIPWOOD MARQUETERIE OCCASIONAL TABLE *Louis XV Style*
Small heart-shaped table inlaid with foliage marquetry and rimmed in brass; on curved and tapered supports. (*Wadsworth*) *Height, 29 inches; width, 16 inches*
- 140- 150. ACAJOU AND BRONZE DORÉ CENTRE TABLE INSET WITH PORCELAIN PLAQUES *Louis XVI Style*
Circular top inset with circular portrait plaque of Louis XVI, signed A. Grisard, surrounded by twelve bust portraits of court ladies, captioned; on columnar and scrolled tripod support with lavish gilded bronze mounts. (*August*) *Height, 33 inches; diameter, 31½ inches*

151. BRONZE GROUP, WITH PEDESTAL

Marius Antonin Mercié, French: b.1845

GLORIA VICTIS. Flying angel bearing off the inert nude figure of a young warrior grasping his broken sword. Signed. With bronze acanthus-molded plinth. *Height of group, 36½ inches; of pedestal, 40 inches*

27¹⁰

152. LOUIS XV CARVED AND GILDED WALL MIRROR

Spanish, XVIII Century

Molded rectangular frame surmounted by carved C-scrolls, flowers, and stalactites. (*Wadsworth*) *Height, 45 inches; width, 35 inches*

27¹⁰

153. MOSAIC-DECORATED TABLE

Turkish, Early XIX Century

Oblong top covered with plate glass, on curved supports with under-shelf; richly inlaid with various woods and ivory.

Height, 28½ inches; length, 31 inches

Pass

154. PAIR DIRECTOIRE INLAID FRUITWOOD SMALL COMMODES

Italian, Late XVIII Century

Rectangular body with two drawers; supported on square tapered legs, and inlaid with light and dark woods.

Height, 28½ inches; width, 27 inches

65-

155. RICHLY CARVED AND GILDED WALL MIRROR

Italian Rococo

Rectangular frame intricately pierced and carved with C-scrolls and leafage. (*Wadsworth*) *Height, 39 inches; width, 34 inches*

30-

156. ACAJOU WRITING DESK, MOUNTED IN BRONZE DORÉ

Louis XV Style

Fitted bureau à dos d'âne with cabriole legs; mounted with bronze doré panels of endive scrollings. (*August*)

Height, 36½ inches; width, 26 inches

35-



[NUMBER 157]

157. CARVED, LAQUÉ AND PARCEL-GILDED SUITE IN AUBUSSON

SILK TAPESTRY

Louis XV Style

Comprising *canapé* and pair *fauteuils*. Cartouche-back cabriole frames, *laqué* gray with carved and gilded floral ornament; covered in Aubusson silk tapestry of fine quality with ivory floral cartouches in a celadon ground. [Lot.] (*August*)

Length of canapé, 5 feet 3 inches[See illustration of *fauteuils*]

158. TWO ACAJOU AND TULIPWOOD MARQUETERIE CABINETS

French XVIII Century Style

Large cabinet with single cupboard door inlaid with a basket of flowers, and small cupboard with frieze drawer and cupboard inlaid with flowers. With white tapestry marble tops, and decorative *bronze doré* mounts.

[Lot.] (*August*)*Height, 47 inches; width, 32½ inches**Height, 31 inches; width, 19 inches*

159. VERNIS MARTIN BOMBÉ COMMODOE, MOUNTED IN BRONZE DORÉ *Louis XV Style*

Shaped commode or cabinet enclosed by two doors with drawer above; decorated with female figures in panels, emblematic of the seasons, and richly mounted in gilded bronze; figured marble top.

Height, 44 inches; length, 46 inches

160. ACAJOU CABINET, MOUNTED IN BRONZE DORÉ *Empire Style*

With three cupboards elaborately mounted with Empire appliqués and centring an oval mirror; *fleur de pêche* marble top. (*August*)

Height, 49½ inches; length, 59½ inches

161. ROSEWOOD MARQUETERIE WORK TABLE *Louis XV Style*

Small oval table decorated with floral *marqueterie* in light woods; gilded bronze gallery and mounts; three drawers. (*Lewis*)

Height, 31 inches; width, 19 inches

162. PAIR PARIS DECORATED PORCELAIN TALL COVERED URNS, MOUNTED IN BRONZE DORÉ *Sèvres Style*

Ovoid urn decorated with nymphs and amors in romantic landscapes, signed Maxant; *bleu du roi* and gold neck, foot and cover, with pineapple finial. Mounted in *bronze doré*, with trumpeting putti handles. (*August*)

Height, 5 feet 7 inches

163. LOUIS XV INLAID BOIS DE ROSE CABINET AFTER GUILLAUME BENEMAN *French, XIX Century*

Front with two glazed doors enclosing plush-lined interior with mirror back. Richly mounted in gilded bronze; figured marble top.

Height 5 feet 2 inches; width, 41 inches

164. BRONZE BUST OF BEETHOVEN, ON RICHLY MOUNTED AND INLAID PEDESTAL

Life-size bust of the famous composer, on round socle; surmounting a Louis XV style shaped pedestal of amaranth inlaid with floral marquetry and richly mounted in gilded bronze.

Height of bust, 25 inches

Height of pedestal, 49 inches

165. INLAID SATINWOOD AND ACAJOU WRITING CABINET,
MOUNTED IN BRONZE DORÉ *Louis XVI Style*
With richly mounted fall-front enclosing small drawers; on cabriole
supports. Top guarded with a bronze gallery.

Height, 55 inches; width, 28 inches

166. INLAID ACAJOU COMMODOE AND DRESSING TABLE *Louis XV Style*
Commode with double cupboard opening to sliding trays, the chiffonier
similarly, and with four long drawers; cabriole legs. Yellow Siena
marble tablets. Inlaid with *parqueterie* and round medallions. [Lot.]
(August)

Height, 35½ inches; length, 50 inches
Height, 5 feet; width, 40 inches

167. BRONZE GROUP, WITH PEDESTAL *Georges Bareau, French: b.1866*
Nude figure of Diana drawing her bow, mounted upon the back of an
eagle alighting upon a rock. Signed. On *vert antique* marble columnar
pedestal.

Height of group, 37½ inches; of pedestal, 37 inches

168. SILK EMBROIDERY THREE-FOLD SCREEN *Florentine Baroque*
Composed of three panels designed with graceful flower and leaf volutes
in a symmetrical arrangement of colors in a light ground.

Height, 6 feet 7 inches; width, 5 feet 7 inches

169. CARVED AND INLAID WALNUT TRIC-TRAC TABLE *Louis XV Style*
With detachable top and inlaid for checkers and backgammon; two
small drawers, leaf-carved cabriole legs. (August)

Height, 29 inches; width, 28 inches



[NUMBER 170]

170. INLAID KINGWOOD WRITING DESK WITH CLOCK,
MOUNTED IN BRONZE DORÉ

Louis XV Style

240- Horseshoe desk fitted with small drawers and leather-covered writing slide, three drawers below; cabriole legs. The frieze and lower drawers inlaid with lattice *parqueterie*, the whole mounted in *bronze doré* with rococo endive scrolls and putto figures supporting candle *bobèches*, by Millet. (*August*)

Height, 56 inches; width, 42 inches

[See illustration]

171. CARVED WALNUT CREDENZA *Italian XVI Century Style*
 With three fluted drawers above guilloche-bordered cupboard doors, carved with large rosette bosses and a cartouched escutcheon; gadrooned base, paw feet. *Height, 45 inches; length, 6 feet 6 inches*

172. CARVED WALNUT CREDENZA *Italian XVI Century Style*
 Type of the preceding, with two drawers and cupboards between sheathed caryatid imbricated pilasters. *Height, 37 inches; length, 44 inches*

173. LOUIS XV CARVED AND GILDED WALL MIRROR *Italian, XVIII Century*
 The rectangular frame embellished on the crest and sides with carved baroque scrolls and foliage. (*Wadsworth*) *Height, 55 inches; width, 34 inches*

ORIENTAL RUGS

174. BOKHARA RUG
 Woven with latchhooked lozenges and white zigzag pattern in a *sang de boeuf* field. (*August*) *Length, 4 feet 4 inches; width, 3 feet 2 inches*

175. TEKKE BOKHARA RUG
 Woven with three chains of particolored octagons and blue crosses, in a dark red ground. (*August*) *Length, 4 feet 5 inches; width, 3 feet 2 inches*



[NUMBER 176]

176. ANTIQUE AGRA RUG

50- Sky blue field bearing a design of lotus palmettes and other blossoms between curling lancet leaves, flanked by two slender poles of floral devices; tan peony border. (N. Y. Private Collector)

Length, 6 feet 8 inches; width, 3 feet 7 inches

[See illustration]

177. NEEDLEPOINT RUG

Woven in a blue-black ground with five chains of crimson and gray armorial cartouches linked by tan foliations.

Length, 5 feet 6 inches; width, 3 feet 3 inches

178. ANTIQUE FEREGHAN RUG

Tête de nègre ground woven with the allover Herati trellis design, with particolored scarlet and sky blue leaves; narrow scarlet and sea green floral borders.

Length, 6 feet 2 inches; width, 4 feet 2 inches

179. CHARLES X AUBUSSON RUG

Circa 1825

Square fragment with tan field, woven with a diamond lattice of mauve blossoms centring rosettes and lozenges.

Length, 5 feet 5 inches; width, 5 feet 1 inch

180. DAGHESTAN RUG

Woven with a pole of five latchhooked diamond medallions in bright colors; rosetted ivory border with counterchanged arrowhead guards. (*August*)

Length, 9 feet 1 inch; width, 3 feet 1 inch

181. KAZAK RUG

Woven with two square plaquettes and smaller geometrical ornaments in a *sang de boeuf* field; deep blue, white and lavender borders. (*N. Y. Private Collector*)

Length, 8 feet 4 inches; width, 4 feet 1 inch



[NUMBER 182]

182. YEZDT VASE RUG

140- Woven on an old scarlet field in shades of fawn, celadon, and pale blue, with rows of floral jardinières joined by creepers and stiff cypresses, within a midnight blue border of small fawn cartouches bearing flowers and song birds.

Length, 9 feet; width, 5 feet 7 inches

[See illustration]

183. VIENNESE HAND-TUFTED GREEN CARPET

Woven *en camaïeu* with two parallel serpentine branches flanked by broad panel bands of acanthus. Deep thick pile. (*August*)

Length, 11 feet 2 inches; width, 6 feet 10 inches

15-

184. MESHED KHORASSAN CARPET

Woven with the allover Herati floral design in reds, blues and greens, in an ivory ground; crimson and green floral borders with nine guards.

A semi-antique rug. (*Rost*) *Length, 12 feet 10 inches; width, 10 feet*

165-

185. SAMARKAND POMEGRANATE CARPET

Field showing *abrash* in broad bands of gray and dull olive, and woven with a fawn trellis of pomegranates; borders of blossoms, fret motives and waves.

Length, 12 feet 3 inches; width, 8 feet 10 inches

Pass

186. AUBUSSON CARPET

Circa 1850

Wine red field, woven with shaded leaf scrollings and centring a celadon floral cartouche; ivory frame border edged with gold, the corners with cartouches of roses and sprays of green oak leaves. Repaired.

Length, 15 feet 5 inches; width, 11 feet 2 inches

175-

187. MESHED CARPET

Ivory field with rosy areas, woven with the allover Herati trellis design in small scale; two rose-crimson principal borders, enclosed by nine floral guards.

Length, 12 feet 9 inches; width, 10 feet

170-



[NUMBER 188]

188. KASHANOR FLORAL CARPET

Woven with diagonal rows of clusters of pink roses and green leafage in a peacock blue ground, within a border of roses enclosed by lavender guards. Close heavy pile.

Length, 15 feet 5 inches; width, 13 feet 9 inches

From Kent-Costikyan, Inc., New York

[See illustration]



[NUMBER 190]

189. KIRMAN CARPET

Woven in shades of pale blue, fawn and tan with an allover design of lotus blossoms and leafy volutes of the Mustaphi type, a design repeated in the deep blue border, which is enclosed by fawn and light blue guards.

250-

Length, 17 feet 5 inches; width, 11 feet 4 inches

190. ANTIQUE FEREGHAN CARPET

Octagonal old scarlet field woven with the familiar Herati floral pattern upon blue lozenge motives, the triangular spandrels with blossoms in a sky blue ground; pistache green border of 'turtle' palmettes and scarlet branch arabesques, enclosed by six guards.

Pass

Length, 18 feet 6 inches; width, 13 feet 9 inches

[See illustration]

191. PERSIAN KURD CAMEL'S HAIR CARPET

Woven with an allover design of oyster white diamond-shaped floral plaquettes in a natural tan ground; midnight blue border of peonies and lotus palmettes garlanded with foliage and containing a rose pink cartouche with inscription. Carpet has been reduced, and the removed fragment will be given to the purchaser.

200-

Length, 21 feet 10 inches; width, 15 feet 2 inches

192. VIENNESE HAND-TUFTED CARPET

Circa 1840

Fluctuating rose crimson field, woven with a design of recurrent octagonal medallions picked out in aquamarine, amid large curling green endive leaves enclosing cruciform clusters of pink, blue and brown blossoms. Repaired and reduced, and finished with a purplish black border.

Pass

Length, 14 feet 1 inch; width, 12 feet

193. MUSKRAT CARRIAGE ROBE

As exhibited. (*August*) *Length, 5 feet 7 inches; width, 52 inches*

200-

194. ANDALUSIAN RUG

Tan field with raised design in uncut black pile of palmettes within a diamond trellis; floral vine border, enhanced in colors.

10-

Length, 6 feet 10 inches; width, 4 feet 10 inches

Illustration of number 190, on preceding page

195. Two RUGS

Baluchistan rug with trellised rose, blue and tan field, and rose border; and a Persian rug woven with lozenge motives in a midnight blue ground. [Lot.] (August)

FRENCH FURNITURE AND DECORATIONS

[CONCLUDED]

196. ACAJOU ARMOIRE, MOUNTED IN BRONZE DORÉ *Louis XV Style*

With glazed double doors and mirror back; fitted with shelves. Mounted with *bronze doré* endive scrollings and putto herms. (August)

Height, 8 feet; width, 53½ inches

197. LOUIS PHILIPPE ROSEWOOD MARQUETERIE OCCASIONAL TABLE

French, XIX Century

Small square table with four hinged flaps, richly decorated with light wood *marqueterie*. (Chamberlain)

Height, 29 inches; length open, 36 inches

198. KINGWOOD MARQUETERIE VITRINE CABINET *Louis XV Style*

With serpentine glazed sides and triple *bombé* front having cartouche-shaped panels of floral *marqueterie* below; shelves in terra cotta velours. With *bronze doré* mounts and *brèche d'Aleppo* marble tablets. (August)

Height, 50 inches; length, 5 feet 7 inches

199. UPHOLSTERED WALNUT ARMCHAIR

Italian Baroque

Square back and seat covered in silk tapestry fabric. Walnut curved arms, supports, and stretchers. (Chamberlain)

200. ACAJOU AND TULIPWOOD MARQUETERIE BEDSTEAD *Louis XV Style*

Quartered head and footboard inlaid with *marqueterie* architectural medallions, the latter flanked by rosetted lattices. With box spring and mattress, and blue satin brocade and rose taffeta coverlet. (August)

Height, 50 inches; width, 56 inches

201. PAIR LOUIS XV CARVED WALNUT SIDE CHAIRS

Spanish, XVIII Century

With shaped open back, cabriole supports, and cane seat.

202. ACAJOU TALL-CASE CLOCK, MOUNTED IN BRONZE DORÉ

Régence Style

Tall cartouche-shaped frame on cabriole legs, lavishly mounted in *bronze doré* with mascarons, rococo leafage, and deities with chariot; crested by two putti with winged monsters. (*August*)

Height, 8 feet 8 inches; width, 34½ inches

203. WALNUT MARQUETERIE SECRETAIRE

Louis XV Style

Lady's slant-front writing desk, decorated with floral *marqueterie* in light woods; on cabriole supports. *Height, 39 inches; width, 27 inches*

204. EBONIZED VITRINE CABINET, INSET WITH PARIS PORCELAIN

With glazed front and sides and mirror back; pediment, friezes, drawer-front, legs and pilasters mounted in porcelain in the Sèvres style, decorated with cartouches of amorous figures in a sky blue ground. (*August*)

Height, 7 feet 3 inches; width, 40½ inches

205. CARVED AND INLAID WALNUT CABINET ON TURNED LEGS

Louis XIII Style

Well made piece with handsomely carved and molded front inlaid with mother of pearl. (*Lewis Estate*) *Height, 48 inches; width, 43 inches*

206. ACAJOU COMMUNE MOUNTED IN BRONZE DORÉ, AFTER

GUILLAUME BENEMAN

Louis XVI Style

A reproduction of the celebrated commode in the Palais de Fontainebleau. Veined white marble top. (*August*)

Height, 38½ inches; length, 6 feet

[See illustration]

207. INLAID ACAJOU TABLE DE CHEVET, AND PAIR CANED CHAIRS

Louis XV Style

Table with *campan melangé* marble top, and quartered cupboard door inlaid with an elmroot medallion; *bronze doré* mounts. [Lot.] (*August*)

Height of table, 28 inches; width, 16½ inches

208. CHARLES X DECORATED PAPER THREE-FOLD SCREEN

French, circa 1825

Featuring rustic vignettes framed in balustrades, in grisaille and sepia in a gray blue ground.

Height, 6 feet 5 inches; width, 5 feet 4 inches



[NUMBER 206]

MARBLE AND BRONZE DORÉ GARNITURE: NUMBER 123

209. INLAID ACAJOU AND TULIPWOOD EXTENSION DINING TABLE

Louis XV Style

35- With quartered and crossbanded oval top, frieze inlaid with a chain of rosettes, and stretched cabriole legs. Two extension leaves. (*August*)

*Height, 29 inches; length, 5 feet 5 inches
extending to 8 feet 7 inches*

210. SET OF TWELVE WALNUT AND OAK DINING CHAIRS

Italian Renaissance Style

150- Comprising a pair of walnut side chairs, and ten oak side chairs. Panel back and seat in brown leather, with gold-tooled borders; turned and blocked stretched legs. [Lot.]

210A. ELABORATELY WROUGHT BRONZE TORCHÈRE *After Jacopo Sansovino*

12⁵⁰ Wired for electricity and surmounted by a carved alabaster bowl for diffused lighting. (*Lewis*)

Height, 6 feet 8 inches

211. BRUSSELS TAPESTRY FOUR-FOLD SCREEN

XVII Century

200- Depicting the nude figure of Hercules, draped in a lion skin and carrying a club, ascending a hill toward a temple, between figures of War and Peace, with putti above bearing a baton and plumed helmet.

Height, 7 feet; length, 9 feet 2 inches

[See illustration]

212. PAIR WROUGHT IRON TWO-LIGHT TORCHÈRES

Italian XVII Century Style

20- Slender spiraled tripod shaft ornamented with acanthus and strap scrolls, with two rosetted arms, fitted for electricity; marble base.

Height, 6 feet 10 inches

212A. SET OF EIGHT LOUIS XV CARVED WALNUT AND BLUE BROCATELLE SIDE CHAIRS

100- With cartouche-shaped back, valanced seat rail and voluted cabriole legs carved with acanthus, rocaille shells, and foliations; back and seat covered in peacock blue floral brocatelle. (*N. Y. Private Collector*)
From the Hampton Shops, New York

10- 213. LOUIS XVI CARVED AND GILDED WALL MIRROR

French, XVIII Century

Rectangular frame with openwork crest composed of leaf volutes and laurel wreath.

Height, 44 inches; width, 25 inches



214. TWO CARVED MAHOGANY ARMCHAIRS AND TWO SIDE CHAIRS

Louis XVIII Style

17¹²
With seat and square back in crimson silk damask, worn, and with printed linen loose covers; on square tapering legs. (*August*)

215. PAIR LOUIS XIV CARVED WALNUT AND NEEDLEPOINT
HIGH-BACK CHAIRS

French Baroque

80-
High rectangular back and seat covered in partly restored silk and wool needlepoint designed with exotic birds, foliage, and flowers in rich colors. Walnut carved and voluted legs and stretchers. (*Lewis Estate*)

216. PAIR CARVED AND LAQUÉ LOVE SEATS, WITH
MATCHING HANGINGS

Louis XV Style

60-
Cabriole frames carved with putti and birds, and *laqué* celadon; covered in flower-embroidered celadon velours. With two pairs of window hangings to match. [Lot.] (*August*)

Length of seats, 34 inches; of hangings, 8 feet

217. LOUIS XV CARVED AND GILDED WALL MIRROR

Spanish, XVIII Century

25-
Leaf-carved oblong frame crested with carved leaf volutes centring a putto. *Height, 55 inches; width, 28 inches*

218. LOUIS PHILIPPE BOULLE CLOCK

French, XIX Century

17¹³
Elaborate clock in the Louis XIV style, richly inlaid and veneered with brass and tortoise shell, and mounted with gilded bronze.

Height, 47 inches

219. INLAID TULIPWOOD SMALL COMMODE

Louis XVI Style

27¹²
Small cabinet of five drawers inlaid with various woods; mounted in gilded bronze; figured marble top. (*Lewis*)

Height, 37 inches; width 18 inches



[NUMBER 220]

220. PAIR CARVED WALNUT ARMCHAIRS IN SIXTEENTH CENTURY
FLEMISH TAPESTRY

80- Handsomely carved chair in the Louis XIV style, the high rectangular back and the seat covered with antique Flemish tapestry woven with allegorical figures, flowers, and fruits. (*Lewis*)

221. LOUIS XV INLAID WALNUT TEA TABLE *Italian, XVIII Century*

30- Oblong tray top on cabriole supports; one drawer. Reconstructed.

Height, 20 inches; length, 31 inches

222. MAHOGANY CENTRE TABLE AND A DECORATED BOUDOIR WRITING TABLE

Victorian cartouche-shaped table with lift-off *fleur de pêche* marble top bordered with painted porcelain plaques; and small drum table with fitted drawer and cupboard, and undershelf, decorated with flowers, amors, and masks. [Lot.] (*August*) *Heights, 31 and 29½ inches*

40-

223. LOUIS XV CARVED AND GILDED PIER MIRROR *Spanish Rococo*
Oblong frame with richly pierced and carved outline of acanthus volutes and C-scrolls. (*Wadsworth*)

Height, 6 feet 8 inches; width, 4 feet 7 inches

30-

224. THREE CARVED AND LAQUÉ SETTEES *French XVIII Century Style*

Louis XV ivory *laqué* cane-back *causeuse*, and a love seat in sky blue silk brocade; and a Louis XVI green *laqué* horseshoe *canapé* in brocade and carved with birds and festoons; inset with clock. [Lot.] (*August*)

35-

225. THREE PAIRS IVORY SATIN BROCADE WINDOW HANGINGS

Matching the covering of the preceding *canapé*. (*August*)
Length, 7 feet 6 inches; widths, 25, 30 and 46 inches

60-

226. PAIR CARVED WALNUT AND PLUM VELOURS STATE CHAIRS *Spanish Renaissance Style*

With carved arms and finials; back and seat in plum velours with silk tasseled fringe. (*Lewis*)

Pass

226A. CARVED WALNUT LIBRARY TABLE *Italian Renaissance Style*

Massive oblong top supported on cartouche-shaped end pedestals handsomely carved. (*Lewis*) *Height, 32 inches; length, 7 feet 6 inches*

50-

227. BRONZE GROUP, WITH MARBLE PEDESTAL

Emile-Louis Picault, French: XIX Century

VICTORY. A winged female holding torch and laurel branches, striding over the recumbent figure of Youth with satchel, gourd, and staff beside him. Cast by Henri Houdevine. Surmounting dark green marble pedestal.

*Height of group, 36 inches**Height of pedestal, 39 inches*

228. FOUR CARVED AND GILDED BOUDOIR CHAIRS

Louis XV Style

Small side chair with caned back and seat. (*Lewis*)

228A. CARVED AND GILDED SETTEE

Louis XVI Style

With caned back and sides; silk brocade cushion. (*Lewis*)

Length, 4 feet 4 inches

229. PAIR ANDIRONS AND A TEAKWOOD PEDESTAL

Andirons in Louis XIV style. Chinese teakwood pedestal with marble top. [Lot.] (*Lewis Estate*)

229A. PAIR SAMSON DECORATED PORCELAIN JARDINIÈRES

Decorated in the colors of the *famille rose* with exotic birds and flowers. One repaired. (*Lewis*)

Diameter, 20¾ inches

230. CARVED WALNUT STATE CHAIR IN JACQUARD NEEDLEPOINT

Renaissance Style

With leaf-carved arms terminating in cherub-head volutes; tall back and seat in machine needlepoint with fawn ground.

231. TWO ALGERIAN ONYX PEDESTAL COLUMNS

With *bronze doré* mounts. [Lot.] (*August*) Heights, 36 and 49 inches

20-

232. SET OF IRON FIREPLACE FURNISHINGS

Comprising a pair of andirons with knopped square shaft and scrolled base, and a set of fire tools *en suite*. [Lot.] (*Lewis*)

Height of andirons, 29 inches

200

233. LOT OF FURNITURE, RUGS, AND HANGINGS

Pair triangular small tables with marble top; a Chinese floral rug with gray ground; a silk and bullion baroque hanging on steel rod. [Lot.] (*Chamberlain*)

12⁰⁰

[END OF FIRST SESSION]

\$13,671⁵⁰

SECOND AND LAST SESSION

Saturday, November 26, 1938, at 2 p. m.

CATALOGUE NUMBERS 234 TO 460 INCLUSIVE

CHELSEA, DERBY, ROCKINGHAM, COALPORT AND OTHER OLD PORCELAINS

234. PAIR ROCKINGHAM PORCELAIN ANIMAL GROUPS *Circa 1810*

90- Depicting a white poodle watching a brace of rabbits, on white and gold arboreal base. *Height, 4½ inches*

235. PARIS PORCELAIN JEWEL CASKET AND PAIR MINIATURE URNS

42- Cartouche-shaped box painted with a lady upon a terrace feeding a goat, cherry red and gold floral borders; pair small urns painted with romantic landscapes. [Lot.] (*August*)

Height of urns, 7 inches; length of casket, 10 inches

236. PAIR CHELSEA PORCELAIN ANIMAL GROUPS *Circa 1760*

85- Groups of a ram and lamb, and doe and lamb, with boscage; forming candle holders with flower-shaped sconce. Rare. (*Norcross*)

Height, 5¾ inches

[See illustration]

237. PAIR SAXE BISQUE GROUPS

35- Groups of peasant children and elders; mounted on ormolu bases. (*Chamberlain*) *Height, 5½ inches*

238. PAIR ROCKINGHAM PORCELAIN VASES, AND A DAVENPORT URN

Circa 1830-40

27- Lapis blue vases with forked buff and gold floral handles, and cartouches reserved with a painted nosegay and landscape vignette; and Davenport lapis blue hexagonal vase and cover, molded with flowers and birds. [Lot.] *Heights, 9¾ and 8½ inches*

239. SIX STAFFORDSHIRE COPPER LUSTRE JUGS *Circa 1830-50*

40- Two large jugs molded with figures of dancers and wild deer, respectively; and four small pitchers molded with pastoral figures in colors on a blue band. Two repaired. [Lot.]

Heights, about 7¼ and 4 inches

Illustration of number 236, on page 69

- 17⁰⁰ 240. CHELSEA PORCELAIN FIGURE *Circa 1760*
 A putto seated on a rococo plinth, holding cluster and posy of flowers.
 Repaired. (*Norcross*) *Height, 6¾ inches*
- 17⁰⁰ 241. WALTON STAFFORDSHIRE ANIMAL GROUP *Circa 1820*
 Group of sheep and lamb standing before boscaje; on irregular base.
 (*Norcross*) *Height, 5¾ inches*
- 70⁻ 242. PAIR CHELSEA-DERBY PORCELAIN GROUPS *Circa 1775*
 Charming figures of sheep standing before boscaje; on rocaille-scrrolled
 base. Rare. (*Norcross*) *Height, 6 inches*
- 25⁻ 243. TWO STAFFORDSHIRE FIGURES *Circa 1790*
 Allegorical female figures, one in eastern garb; surmounting square base.
 One repaired. (*Norcross*) *Heights, 9½ and 10½ inches*
- 60⁻ 244. THREE ROCKINGHAM CHINA FIGURES OF THE SEASONS *Circa 1790*
 Figures of two little girls with a flower garland and basket, and a youth
 with sickle and wheatsheaf, in the manner of the well-known Chelsea-
 Derby figures. *Heights, about 10 inches*
- 50⁻ 245. PAIR CHELSEA PORCELAIN CANDLESTICKS *Circa 1760*
 Formed as flower-encrusted tree stumps with reclining goat at the base;
 supporting flower-shaped candle sconce. Gold anchor mark. Imperfect.
 (*Norcross*) *Height, 9 inches*
[See illustration]
- 100⁻ 246. PAIR CHELSEA PORCELAIN STATUETTES *Circa 1770*
 Standing figures of a youth and maiden in flowered costumes, each hold-
 ing a nosegay; on rococo bases. *Heights, 8 and 8½ inches*
[See illustration]
- 50⁻ 247. FINE MARCOLINI MEISSEN PORCELAIN VASE WITH COVER *Circa 1810*
 Baluster vase with original rounded cover encrusted all over on a white
 glaze with a carpet of blue forget-me-nots, and two garlands of colored
 roses surrounding oval reserves exquisitely painted with figures of lovers
 and Commedia dell' Arte in garden landscapes; rococo ormolu base
 mount. *Height, 10½ inches*
[See illustration]

Illustration of number 245, facing page 72



[NUMBER 248]

AT TOP: NUMBERS 246-247-246

248. PAIR CHELSEA-DERBY DECORATED PORCELAIN COVERED VASES

Circa 1780

100- Inverted pyriform lobed vase in the Sèvres taste, molded with acanthus leafage, the neck and domed cover pierced with clustered orifices; gilded cauliflower finial. Painted on a white ground with four panels of flowers and pheasants amid trees. Small repairs. Gold anchor marks.

Height, 15¾ inches

[See illustration]

249. THREE DAVENPORT DECORATED PORCELAIN PLATES, AND
TWO SPODE SAUCER DISHES Circa 1800-25
Pass Davenport plates richly decorated in colors and gold in the Imari taste.
Spode saucer dishes, white and gold. [Lot.] (*Chamberlain*)

250. TWO PAIRS STAFFORDSHIRE GROUPS
50- One depicting a rustic youth courting a maiden in white, the other a
Highland lad and lass, each with a large sheep.
Heights, 8½ and 7¼ inches

251. DR WALL WORCESTER DECORATED PORCELAIN TEA SERVICE
Circa 1770
40- Comprising a drum-shaped teapot, sugar bowl and cover, cream bowl,
caddy, ten cups, eleven saucers, and four mugs. Tastefully decorated
in mulberry with small groups of fruits and foliage; gilded borders;
covers with flower finials. [Lot.]

252. FOUR LOUIS PHILIPPE SÈVRES DECORATED PORCELAIN PLATES
Circa 1835
10- Pair of shaped plates painted with amors within spider web blue and
gold borders. A pair decorated with rococo figures. [Lot.]
Diameter, about 9½ inches

253. TWO PAIRS ROCKINGHAM DECORATED APPLE GREEN
PORCELAIN VASES Circa 1840
45- Pair of lobed pyriform vases painted with nosegays of flowers; and pair
of scalloped tulip-form vases reserved with buff and gold molded acan-
thus leafage.
Heights, 8½ and 8¾ inches

254. CAPO DI MONTE PORCELAIN CASKET AND PAIR VASES
40- Oval jewel box molded with *adossés* sphinxes and a mythological scene;
and pair of pear-shaped vases depicting Vulcan and Mercury, and two
ram's-head handles. [Lot.] (*August*)
Height of vases, 13 inches; length of casket, 12 inches

255. ROCKINGHAM DECORATED PORCELAIN PART TEA SERVICE
Circa 1830
125- Comprising a shaped two-handed sugar bowl and cover, waste bowl,
six cups, five saucers, and a plate. Decorated in apricot, white, and gold.
[Lot.] (*N. Y. Private Collector*)

256. PAIR COALBROOKDALE DECORATED ROSE PINK PORCELAIN
VASES AND COVERS Circa 1830

Baluster vase on square base, finely painted with clusters of flowers in reserves with gilded scroll borders in a rose pink ground.

Height, 14½ inches

257. PAIR CHELSEA-DERBY PORCELAIN CANDLESTICK GROUPS Circa 1780

Seated figures of a youth with flowered waistcoat and yellow costume, and a maiden with rose cape and violet apron, holding a bird and cage, respectively, with pet dog and lamb; before a flowering *bocage* from which springs a candlestick arm.

Height, 9½ inches

[See illustration]

258. PAIR COALPORT DECORATED AND ENCRUSTED PORCELAIN VASES

Circa 1830

Inverted pear-shaped vase, with two scrolled handles springing from the lip; painted with two landscape vignettes and garlanded with encrusted blossoms.

Height, 11 inches

259. ORIENTAL LOWESTOFT DECORATED PORCELAIN ARMORIAL PLATTER

XVIII Century

Octagonal platter painted with sprigs of flowers and leaves, and with a coat of arms in colors.

Length, 18½ inches

260. CAPO DI MONTE PORCELAIN COFFRET

Oblong coffer with relief decoration in colors of Bacchanalian and mythological scenes separated by fluted marbled stiles, the paneled domed cover depicting the combat between the Centaurs and the Lapithae. (*August*)

Length, 15 inches

261. SEVEN LOUIS PHILIPPE DECORATED PORCELAIN DESSERT

PLATES AND FIVE DINNER PLATES Circa 1840

Painted in colors and gold with the royal cipher, amors, and flowers in a white reserve with yellow and gold border. [Lot.] (*Hawes*)

Diameters, 8½ and 9½ inches

262. TWELVE CROWN DERBY DECORATED PORCELAIN DINNER PLATES

Circa 1800

Soft ivory white plate, the border decorated in pale gold and iron red with a running vine of conventional foliage. Duesbury mark. Few chips.

Diameter, 9¾ inches

Illustration of number 257, facing page 74

263. ROCKINGHAM DECORATED APPLE GREEN PORCELAIN GARNITURE

Circa 1840

Set of three pyriform vases with scalloped lip, and saffron and gold twisted handles; each with two painted reserves of garden flowers.

[Lot.]

Heights, 8¼ and 9¾ inches

40-

264. TWELVE TOURNAI BLUE AND WHITE PORCELAIN PLATES, AND ELEVEN SOUP PLATES

Circa 1820

Simulating Worcester porcelain, with plain white centre and conventional border. [Lot.]

Diameter, 9¼ inches

15-

265. SET OF TWELVE ORIENTAL LOWESTOFT PORCELAIN PLATES

Late XVIII Century

Octagonal plate painted in rose and green with small groups of flowers within diaper pattern rose border.

Diameter, 9 inches

50-

266. TWELVE LOUIS XVI SÈVRES DECORATED PORCELAIN PLATES

Circa 1770

Shaped plate, beautifully painted with sprigs of flowers in colors; blue and gold border simulating the outline of a shell. Marks of various decorators on the backs. Chipped. [Lot.]

Diameter, 9½ inches

160-

267. DERBY FINELY DECORATED PORCELAIN TEA SERVICE

Circa 1805

Comprising teapot, milk jug, covered sugar bowl, and waste bowl with square bulbous bodies; two cake plates, seven coffee cups, eight teacups, and ten saucers. Imari compartmented floral design in blue, red, green and gold. [Lot.]

[See illustration of part]

120-

268. CROWN DERBY DECORATED PORCELAIN TEA SERVICE

Circa 1795

Comprising teapot with stand, milk jug, covered sugar bowl, two cake plates, ten teacups, ten coffee cups, and ten saucers. Imari floral design in iron red, royal blue, and gilding. [Lot.]

[See illustration of part]

210-



[NUMBERS (FROM TOP TO BOTTOM) 267-268-269]

269. COALPORT APPLE GREEN PORCELAIN DESSERT SERVICE
PAINTED WITH BRITISH VIEWS

Circa 1825

175- Comprising three high compotes, three *tazzas*, and twelve dessert plates. Beautifully painted with romantic British scenery within an apple green border edged with gold. [Lot.]

[See illustration of part]

270. THIRTEEN NANKING DECORATED PORCELAIN PLATES *XVIII Century*
Decorated in *rouge de fer*, blue, and gold, with sprigs of peonies, lotus,
50- and plum blossoms in a soft white ground. [Lot.] *Diameter, 9 inches*

271. COALPORT DECORATED APPLE GREEN PORCELAIN DESSERT SERVICE
Circa 1815

40- Comprising two compotes, four *tazzas*, and nine dessert plates. Charmingly painted with nosegays of garden flowers, within an apple green border rimmed with gold. [Lot.]

272. DRESDEN PORCELAIN COACH GROUP

130- Depicting the departure of an Empress in a coach drawn by two horses, with coachman in lapis blue coat, and footman in claret, a gentleman and lady-in-waiting bowing low. Rococo base strewn with encrusted blossoms. (*August*) *Length, 21½ inches*

273. MEISSEN CANARY YELLOW AND GOLD PORCELAIN VASE *Circa 1830*

15- Inverted pear-shaped vase with round foot, glazed canary yellow with gilded acanthus leafage; white and gold S-scrolled handles. *Height, 23½ inches*

274. DECORATED PORCELAIN URN WITH COVER *Capo di Monte Style*

52¹⁵ Leaved urn molded with floral volutes separating male and female masks, and upon the shoulder a frieze of Bacchanalian *putti* with goat in full relief; the pierced cover with *putto* finial. (*August*) *Height, 30 inches*

275. PARIS DECORATED AND GILDED PORCELAIN KRATER URN WITH COVER

50- Painted with romantic landscapes, floral clusters and gilded rococo ornament, laurel swags and gilded lion-head handles; cauliflower finial. Together with a Samson Lowestoft porcelain armorial jardiniere. [*Lot.*] (*August*) *Height, 28 inches*

276. ROCKINGHAM DECORATED ROYAL BLUE AND GOLD PORCELAIN VASE

Circa 1840

35- Bobbin-shaped vase in royal blue porcelain, with two rococo cartouches reserved with nosegays of garden flowers; rococo white and gold base, dragon-scrolled handles, and leaf-molded mouth. Handles repaired. *Height, 21½ inches*

GEORGIAN SILVER AND SHEFFIELD PLATE

277. THREE GEORGIAN SILVER SNUFF BOXES *Birmingham, circa 1810-25*

72²⁰ Two plain, the third with striped engraving. Date marks of 1808, 1811 and 1825. *Lengths, about 2½ inches*

278. TWO SILVER SNUFF BOXES *Birmingham, circa 1810 and 1840*

32²⁰ Small box with striped engraving, 1808; and a larger cartouche-shaped box engraved and parcel-gilded and centring an escutcheon, by Edw. Smith, c. 1840. *Lengths, 2¾ and 3¼ inches*

279. THREE DECORATIVE SNUFF BOXES *Circa 1820-40*

12²⁰ French lacquer box painted with figures of Nessus and Deianira; and two silver-mounted ebony boxes of oval section. *Lengths, 2¾ to 3½ inches*

280. FOUR PARCEL-GILDED SILVER COMPOTE SPOONS, AND
SIX BERRY SPOONS London, 1803-30
Four George III compote spoons by various makers, 1803 and 1806,
the gilded bowls *repoussé* at a later date with fruit and grapes; and a set
of six William IV berry spoons, by Jas. Hobbs, 1830, almost matching,
in case. [Lot.]
282. TWO PAIRS GEORGE III SILVER SERVERS, AND SIX PISTOL-HANDLED
TABLE KNIVES
Plain round salad servers, by Jas. Lloyd, Wm. Bell, and Eley & Fearn,
London, 1808 and 1814; and six Victorian silver-handled pistol knives,
London, 1841. [Lot.]
283. TWELVE WILLIAM IV SCOTTISH SILVER TABLESPOONS
Wm. Russell, Glasgow, 1834
Matched set, with plain handles.
284. SET OF FOUR GEORGE III GILDED SILVER COMPOTE SPOONS
Robt. Garrard, London, 1803; and Thos. Wallis, 1806
Fluted bowl *repoussé* with a cluster of pear, melon and pineapple, the
shank flat-chased with leafage and trellis work, and a scrolled cartouche.
In case.
285. TWELVE FINE GILDED SILVER FRUIT KNIVES AND TWELVE FORKS
Francis Higgins, London, 1867
Richly chased with interlacing branches of grapevines reserved with a
blank cabochon cartouche.
286. SILVER CIRCULAR PLATTER Circa 1810
Plain dish with reeded edge, and crested. (*August*)
Diameter, 11 inches
287. GEORGE IV SILVER EGGCUP STAND AND TOAST RACK
Sheffield, 1820, and London, 1823
Frame with molded rococo ornament, by Thos. Watson & Co., Sheffield,
1820; fitted with six silver-plated eggcups and five spoons, crested; and
gadroned rack with shell and scroll handle, by Jos. Craddock & Wm.
Reid, London, 1823. [Lot.] (*August*) Heights, 9 and 4¾ inches
288. GEORGE III REPOUSSÉ SILVER COVERED TANKARD London, 1789
Repoussé in high relief at a later date, with a cow and calf in landscape,
and a countryman ploughing, the domed hinged cover with pineapple
finial. With restorations. (*August*) Height, 9½ inches



[NUMBERS 292 AND 293]

AT TOP: NUMBERS 289-290-291

289. WILLIAM IV WROUGHT GILDED SILVER CLARET JUG

Robt. Hennell, London, 1831

115
Pear-shaped jug cupped in a gadrooned band of acanthus, the upper part wrought with rich design of applied grapevines on a granulated ground; twisted branch handle. Engraved about foot with a presentation inscription. Weight, about 56 ounces. (*August*) Height, 11 $\frac{3}{4}$ inches

[See illustration]

290. GEORGE III SHEFFIELD PLATE AND IRISH CUT GLASS

STAND OF DECANTERS

Circa 1810

44- Rounded square stand with beaded edge, fitted with four fine old cut glass barrel-form bottles with stoppers and a sweetmeat dish, in the carrying frame. Rare.

Height, 13 inches

[See illustration]

291. IRISH GILDED SILVER CLARET JUG

R. Smith, Dublin, 1850

70- Lobed pear-shaped ewer with round foot, hinged cover and branch handle; with applied decoration of grapevines. (*August*)

Height, 12 inches

[See illustration]

292. STERLING SILVER TWO-HANDLED TEA TRAY

Tiffany & Co., New York

175- Scrolled quatrefoil tray of plain silver, with rim band of leaf-entwined reeding; two plain loop handles. Weight, about 157 ounces. (*August*)

Length, 27½ inches

[See illustration]

293. GEORGIAN REPOUSSÉ SILVER TEA SERVICE

Alice & Geo. Burrows, London, 1818 and 1820

80- Bulbous teapot, two-handled sugar bowl, and milk jug. Elaborately *repoussé* with foliations and rococo scrolls on a closely hammered ground, reserved with a crested cartouche; the teapot with Chinese figure finial, and carved ivory handle. [Lot.] (*August*)

[See illustration]

294. GEORGE III REPOUSSÉ SILVER COFFEE POT

Peter & Ann Bateman, London, 1791

95- Pyriform pot with hinged cover, curved spout, and hollow flaring foot, with pearwood loop handle; richly *repoussé* at a later date with foliations and rococo scrolls, and two rocaille cartouches, one initialed s. (*August*)

Height, 13¼ inches

295. WILLIAM IV MASSIVE GILDED SILVER CANDELABRUM-EPERGNE

E. J. & W. Barnard, London, 1836

155- Tall fluted acanthus shaft entwined with leafage, arranged with six leafy scrolled arms with urn *bobèches*, and supporting a central open-work lattice basket with border of wrought blossoms; on bulbous tri-lateral base with rococo shell-and-leaf supports, monogrammed. Convertible as epergne, furnished with six small latticed bowls with three cut glass liners. All parts fully marked. (*August*)

Height, 26½ inches

PAINTINGS

- 25- 296. THE TOAST *Victor Schivert, German: XIX Century*
Musicians and a child dancing before two Louis XIII cavaliers seated at a tavern table toasting a servant girl. Signed, and dated *München, '87.* *Height, 14 inches; length, 19½ inches*

- 75- 297. LANDSCAPE SKETCH *John Singer Sargent, N.A., R.A., American: 1856-1925*
View of a park with a sculptured urn at the left and a pond centring the middle distance; a blue sky penetrates the branches of the trees. Signed. (*E. M. Bratter, Attorney*)
On board: Height, 14 inches; length, 15 inches
Purchased from the artist

- 35- 298. FRENCH CAVALRY OFFICER *Etienne Prosper Berne-Bellecour, French: 1838-1910*
An officer in blue and scarlet uniform, standing on a road before a stretch of snow-covered fields, glancing up from a folded chart in his hands. Signed. *Cradled panel: Height, 15 inches; width, 10½ inches*

- 60- 299. APPROACHING STORM *Alexander H. Wyant, N.A., American: 1836-1892*
Nimbus clouds fill the sky, with sunlight penetrating to light a green meadow and a small white farmhouse at the right half concealed by trees. Signed. (*E. M. Bratter, Attorney*)
Height, 13 inches; length, 17 inches
Collection of John J. Campbell, New York, 1935

- 25- 300. FARM LANDS *Dwight W. Tryon, N.A., American: 1849-1925*
Wide expanse of hayfields with a man working; a low hedge encloses the middle distance with a white farmhouse and green fruit trees beyond. Signed, and inscribed. (*E. M. Bratter, Attorney*)
Height, 10½ inches; length, 21½ inches
Collection of Norman E. Montross, New York, 1933

- 50- 301. IN THE ADIRONDACKS *Homer D. Martin, N.A., American: 1836-1897*
Mirror-like surface of a lake narrowing at the left between shores wooded with low pine trees. Signed. (*E. M. Bratter, Attorney*)
Height, 12½ inches; length, 20¼ inches



[NUMBER 302]

- 40- 302. SUMMER *Alexander H. Wyant, N.A., American: 1836-1892*
 Cirrus clouds in a blue sky, above green fields bounded by a rivulet with
 flowering banks, stone walls, and bushy trees in full green foliage.
 Signed. (*E. M. Bratter, Attorney*)

Height, 12 inches; length, 17 inches

[See illustration]

- 30- 303. DUTCH CANAL SCENE *Charles Paul Gruppe, American: b.1860*
 A narrow canal spanned by a foot-bridge in the middle distance, and
 bordered by the red tile-roofed houses of a village; a woman washing
 at the left. Signed. *Height, 16 inches; length, 22 inches*

- 25- 304. SLEEPING CAVALIER *Koloman Dery, Hungarian: b.1859*
 A man in buff leather coat with scarlet sleeves, and top boots, asleep in
 a cellar, holding a jug of wine. Signed, and dated 1884.

Height, 17½ inches; width, 14¼ inches

305. EPISODE FROM THE FRANCO-PRUSSIAN WAR

Wilfrid Constant Beauquesne, French: b.1847

20- Depicting mounted French dragoons charging into battle from the left, with regiments of infantry in the distance. Signed.

Height, 13¼ inches; length, 21¾ inches

306. FEEDING THE CHICKENS *Antonio Montemazzo, Italian: 1841-1898*

32- Sunlit farmyard beside an old well, with a girl in blue apron carrying a bucket of feed, surrounded by chickens. Signed.

Height, 24 inches; width, 19¼ inches

306A. CUIRASSIERS IN BATTLE *Charles Louis Kratké, French: b.1848*

40- An officer brandishing a sword, astride a charging white mount; in the background, fighting cavalry, and field artillery at the right. Signed at lower right, L. KRATKE, and dated 1897. (*Lewis Estate*)

Panel: Height, 24 inches; width, 19½ inches

307. VIEW OUTSIDE SALISBURY

John Constable, R.A.(?), British: 1776-1837

105- View of fields and cottages with figures in the foreground and woods at the right; in the middle distance, the spire of a cathedral. Signed and dated 1810. (*August*)

Height, 18½ inches; length, 20¾ inches

308. MOUNTAIN POOL *Henry Pember Smith, American: 1854-1907*

15- A foreground pool bordered by large gray boulders and shadowed by tall trees on the shore; green fields beyond. Signed.

Height, 20 inches; length, 28 inches

308A. THE BLACKSMITH'S SHOP

Jules Jacques Veyrassat, French: 1828-1893

50- Corner of a cobbled yard, with bright sunlight falling on white walls; two men are shoeing a work horse, three other horses standing nearby. Signed. (*Lewis Estate*)

Height, 24½ inches; width, 20 inches

309. BRUME DANS LA VALLEE DE LA DORDOGNE

William Didier-Pouget, French: b.1864

85- A shepherdess and flock wandering among heather blooming in light purple, with a cottage nearby; the winding river disappearing through the mountains of the background. Signed.

Height, 28½ inches; length, 36 inches

30- 310. PORTRAIT OF A LADY *Raimundo de Madrazo, Spanish: 1841-1920*

Waist-length portrait of a young woman looking toward the observer, wearing a pale blue-green décolleté gown; deep emerald green background. (*E. M. Bratter, Attorney*)

Height, 25¾ inches; width, 21½ inches

- 40- 311. LE BARRAGE *Leon Richet, French: 1847-1907*
Wide landscape of green fields, centred by an old thatch-roofed building and a copse of tall trees bordering a narrow dam; two figures appear at the left. Signed. *Height, 24 inches; length, 32 inches*
From Bernheim Jeune et fils, Paris, 1902
- 130- 312. INSPECTION *Edouard Antoine Portielje, Belgian: b.1861*
A young girl in trailing pale blue satin gown with plumed bonnet, standing before a looking glass. Signed.
Height, 46½ inches; width, 34½ inches
- 37- 313. CAPTAIN WILLIAM RAMSEY
Attributed to Charles B. J. Févret de Saint-Mémin,
French-American: 1770-1852
Profile portrait to the left at bust length, within a painted brown oval, wearing a dark blue coat with white jabot, and powdered bag-wig. (Martin Estate) *Height, 32½ inches; width, 27 inches*
Captain William Ramsey (d. 1845) served during the whole of the Revolutionary War, and was previously an Indian fighter in Kentucky. He moved to Missouri in 1802, and died in Boone County May 24, 1845.
- 25- 314. SIBYL *Attributed to Guido Reni, Bolognesi: 1576-1642*
Waist-length figure in rose silk robe and blue cloak, facing half right, the turbaned head glancing up to the left.
Height, 32 inches; width, 26½ inches
- 40- 315. CARD PLAYERS *Giacomo Francesco Cipper, Italian: fl.1710-1736*
Ragged figures of two boys in brown coats and tricornes, seated at a table and playing cards, with dead game at their feet. (August)
Height, 41 inches; width, 31 inches
- 50- 315A. CATTLE BY A POOL *William M. Hart, N.A., American: 1823-1894*
Bright afternoon sunlight upon a view of green fields interrupted at the right by tall trees; cattle graze, some wandering along a path by a foreground pool. Signed. (Lewis Estate)
Height, 26 inches; width, 22 inches
- 160- 316. THE NATIVITY
Spanish School under Flemish Influence, Early XVI Century
Kneeling figure of the Virgin in green and crimson robes, adoring the Child surrounded by angels, with S. Joseph appearing at the left. In the background, the vision of a shepherd in a landscape. Tabernacle frame.
Panel: Height, 41 inches; width, 28 inches

ENGLISH FURNITURE AND DECORATIONS

317. FOUR DECORATIVE CHINESE OBJECTS

12¹² A Ting *yao* bottle; a Fukien crackled white figure of a Buddhistic deity; a pair spinach jade small cups. [Lot.] (*Norcross*)

318. FOUR DECORATIVE SMALL OBJECTS

XVIII-XIX Century

22⁵ Comprising a Georgian tortoise-shell-veneered oblong tea caddy; a pair of Delft charmingly painted faïence square jardinières; and an Andalusian green glass jar. [Lot.] (*Norcross*)

[See illustration of tea caddy]

319. TWO PAIRS GEORGIAN CUT GLASS CANDLESTICKS

32⁵ Pair cut in pineapple pattern and hung with lanceolate prisms. Another pair of different design. (*Norcross*) *Height, about 8 inches*

[See illustration]

320. GEORGIAN TORTOISE-SHELL TEA CADDY, AND A PAIR GILDED SILVER FLOWER VASES

35⁵ Tea caddy with two interior compartments, veneered with fine light shell, *circa* 1810; and a pair of wire-pattern vases with red glass liners, Sheffield, 1905; in case. [Lot.] *Heights, 4½ and 6 inches*

321. CHINESE CARVED CARNELIAN AGATE COVERED VASE

35⁵ Carved and undercut with a sage and three goats beneath pine trees with perched birds (one imperfect), the cover with goose finial. Has stand. (*August*) *Height, 6½ inches*

322. PAIR GEORGIAN SPIRALLY TURNED WALNUT CANDLESTICKS

English, XVIII Century

35⁵ With open 'barley sugar' twist, and round foot. *Height, 11 inches*

[See illustration]

323. HEPPLEWHITE INLAID MAHOGANY TEA CADDY

English, XVIII Century

20⁵ Small oblong chest fitted with two compartments for green and black tea, and containing a fine cut glass jar of contemporary date. (*Norcross*)

Length, 11¼ inches

Illustration of number 318, on page 80; of number 319, on page 67; of number 322, on page 68

324. SET OF SIXTEEN PEWTER TANKARDS *English, Early XIX Century*
Plain pint mug with loop handle and engraved monogram.

50-

Height, 5 inches

325. REGENCY BLACK AND GOLD-LACQUERED ZITHER

Tight, London, circa 1815

Stringed instrument in the classic style; inscribed with the maker's name, *Tight, Foley Place London*, musical instrument maker to the court. In original leather-covered case. *Height, 34 inches*

10-

326. PAIR FINE LOUIS XIV SILK AND WOOL NEEDLEPOINT CUSHIONS

French, Late XVII Century

One worked with figures of Amazons shooting with a bow at game birds in a meadow; the other with seated figures of Flora and Minerva; the figures in *petit point*.

130-

[See illustration]



[NUMBERS 327 AND (AT TOP) 326]

327. TWO NEEDLEPOINT CUSHIONS *French, XVII-XVIII Century*
With fine *petit point* cartouches, one depicting the marriage feast at Cana, in a dark crimson ground; the other, Ceres garlanded with blossoms, in a yellow ground.

[See illustration]

328. HEPPLEWHITE INLAID SATINWOOD WORK BOX *English, XVIII Century*

Beautifully made example fitted with box-like compartments, and containing glass inkpots, a drawer in the lower part, a mirror in the lid. Rare. (*Norcross*) *Length, 12½ inches*

[See illustration]

329. TWO MINIATURES *Persian School, XVI Century*

One depicting a military reconnaissance, with horsemen partly camouflaged by a tree they are carrying; the other a council meeting on a sward amid rockery. With calligraphy written in four columns, and floral and animal border. Framed.

Collection of H. MacDonald, Parke-Bernet Galleries, Inc., 1938

330. LOT OF DECORATIVE PEWTER *XVIII-XIX Century*

Comprising a set of five Irish eighteenth century pewter eighteen-inch chargers; glass-bottomed tankard; two goblets; four tablespoons and forks. [Lot.]

331. CARVED IVORY TWO-HANDLED TANKARD, MOUNTED AS LAMP *Flemish Renaissance Style*

Carved with a Dionysian festival with dancers and attendants; two scrolled handles surmounted by vine-wreathed bearded satyr heads, on four satyr-head supports. Fitted for electricity, with embroidered silk shade, and ivory group finial. (*August*)

Height, 26½ inches

332. PAIR SHERATON MAHOGANY KNIFE BOXES *English, Early XIX Century*

With slant top opening to interior slotted and inlaid with stringing; shaped front. *Height, 14¾ inches*

Illustration of number 327, on preceding page; of number 328, on page 67

333. GEORGIAN MAHOGANY BRACKET CLOCK

David Samuel & Son, London, circa 1820

35- Molded rectangular case enriched with gilded metal mounts; chiming and striking movement. (*Lewis*) *Height, 27 inches*

[See illustration]

334. GEORGIAN SMALL STEEL FENDER

English, XVIII Century

20- Small yoke-shaped curb pierced with a band of conventional ornament. Together with three steel fireplace tools. (*Norcross*)

Length of fender, 38 inches

335. CHARLES I STUMPWORK PICTURE

English, XVII Century

35- Worked in raised silk embroidery with scattered sprays of flowers, animals, birds and insects, surrounding figures of Charles I and Henrietta Maria flanking a fountain; re-applied on écru silk. Framed.

Height, 16¼ inches; length, 21¼ inches

[See illustration]

335A. BEAD-EMBROIDERED PICTURE OF 'AMERICA' *American, XIX Century*

20- A young woman, riding on an eagle, holding aloft the stars and stripes. Framed. (*Chamberlain*)

336. SHERATON INLAID MAHOGANY BAROMETER

English, Late XVIII Century

45- So-called sign-post barometer, the slender case banded and inlaid with light sycamore; mounting barometer and thermometer gages. Rare. (*Norcross*)

Height, 39 inches

337. PAIR SILK EMBROIDERY AND WATERCOLOR MARINE PICTURES

30- The U.S. armored steam yacht 'Stranger', and a sail and steam yacht flying the American flag. Skilfully executed partly in silk and watercolor, and tastefully framed. (*Lewis*)

Height, 20 inches; length, 36 inches

338. PAINTED TOLE TEA TRAY

English, Late XVIII Century

20- Painted with a group of children in a circular medallion, after Bartolozzi, in an ivory white ground with gilded border. Rare. (*Norcross*)

Length, 30 inches

339. REGENCY ROSEWOOD BAROMETER, INLAID WITH MOTHER OF PEARL

Lione & Somalvico, London

60- Banjo form, with border of floral ornament inlaid in mother of pearl; fitted with barometer, thermometer, hygrometer, and spirit level.

Height, 38½ inches

Illustration of number 333, facing page 82; of number 335, facing page 87

10- 340. TWO PAINTED TOLE TRAYS *English, XVIII-XIX Century*
 Charming oval 'Sheraton' tray painted with a portrait of Mrs Siddons
 in the character of 'Zara'. Shaped oblong tray decorated with *chinoiserie*.
 (Norcross) *Lengths, 18 and 22 inches*

10- 341. GEORGIAN SATINWOOD KNIFE BOX, AND A NEEDLEWORK BELL PULL
English, XVIII-XIX Century
 Knife box with hinged slant lid; needs a few small repairs. Needlework
 bell pull with *repoussé* brass and ruby glass handle. Together with an
 iron trivet. [Lot.] (Norcross)

47¹⁰ 342. LATE GEORGIAN CARVED MAHOGANY CANTERBURY
English, circa 1820
 Repository for books and folios; carved with laurel wreaths; a drawer
 in the lower part. *Height, 18 inches; length, 20 inches*

31¹⁰ 343. HEPPLEWHITE INLAID MAHOGANY OCCASIONAL TABLE
English, XVIII Century
 Small oblong table with two hinged leaves, one drawer, square tapered
 legs, and X-stretcher. (Norcross)
Height, 27 inches; width open, 23 inches

55 344. GEORGIAN BLACK AND GOLD LACQUER WIG STAND
 Stand of tripod form, with circular top to hold a basin, two small
 drawers at the centre; simulating Chinese lacquer. (Norcross)
Height, 31¾ inches

80- 345. HEPPLEWHITE MAHOGANY OCCASIONAL TABLE
English, XVIII Century
 With oval top and single drawer having ivory knob handles; on square
 slightly tapering legs with X-stretcher.
Height, 28¼ inches; width, 24 inches

30- 346. SHERATON INLAID ROSEWOOD SEWING TABLE
English, Late XVIII Century
 Octagonal hinged top banded with light woods; has yellow pongee
 sewing bag; on slender flaring supports with X-stretcher. (Norcross)
Height, 28¾ inches; width, 16¼ inches

[See illustration]



[NUMBER 347]

[NUMBER 346]

GEORGIAN CUT GLASS CANDLESTICKS: NUMBER 319

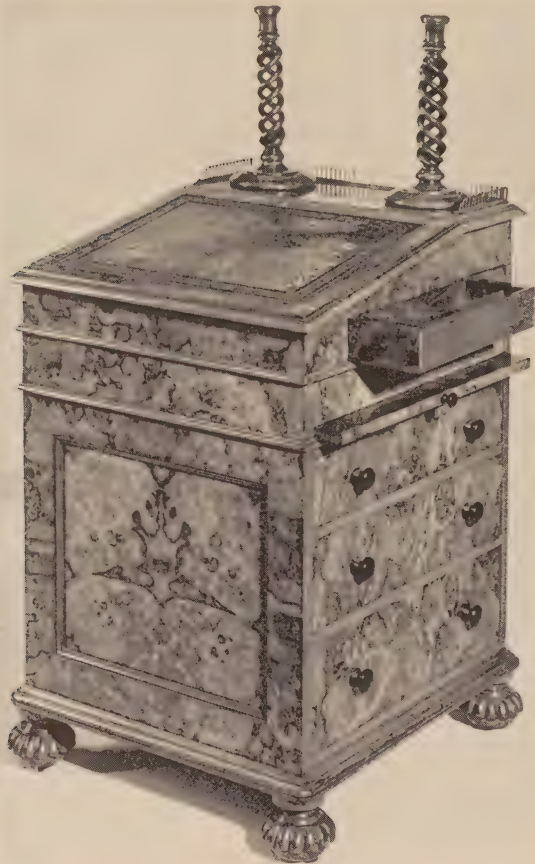
HEPPLEWHITE SATINWOOD WORK BOX: NUMBER 328

347. SHERATON INLAID SATINWOOD OCCASIONAL TABLE

Small square table with leather-lined top, and drawer fitted for writing purposes; on square tapered legs with incurvate stretchers. (*Norcross*)

Height, 27 inches; width, 15½ inches

[See illustration]



[NUMBER 348]

GEORGIAN WALNUT CANDLESTICKS: NUMBER 322

348. REGENCY OLIVEWOOD DAVENPORT DESK

160- Small desk, with galleried top and hinged slant front covered in tooled leather and opening to fitted interior; the desk slides forward from the paneled underbody, which is fitted with drawers and slides; gadrooned mushroom feet, castered. *Height, 33½ inches; width, 20½ inches*

[See illustration]



[NUMBER 349]

[NUMBER 350]

CHELSEA PORCELAIN GROUPS: NUMBER 236

349. SHERATON INLAID MAHOGANY OCCASIONAL TABLE

English, Late XVIII Century

70- Octagonal top with drawer, square tapered legs with incurvate stretchers. (*Norcross*)
 Height, 27½ inches; width, 18¾ inches

[See illustration]

350. SET OF SEVEN SHERATON BLACK AND GOLD CHAIRS

English, circa 1800

210- Pleasing chair in the Directoire taste, the slightly flaring back filled with cane; frame painted black and gold; cane seat furnished with a green velours cushion. Two armchairs and five side chairs. (*Norcross*)

[See illustration of one]

351. SET OF EIGHT SHERATON MAHOGANY DINING CHAIRS

English, circa 1800

440- Comprising two armchairs and six side chairs. Open rectangular 'Directoire' back with fluted rails and saltire splat; seat covered in crimson striped sateen; round fluted and tapering legs.

352. GEORGE III MAHOGANY TILTING-TOP PIECRUST TABLE

English, XVIII Century

75- Circular top with piecrust edge, tilting on a round columnar support with spiraled vase fluting and cyma-curved tripod ending in snake feet. Height, 28 inches; diameter, 23½ inches

353. CHIPPENDALE CARVED MAHOGANY WALL MIRROR

English, XVIII Century

125- With fret-carved frame; containing its old glass. Some repairs. (Norcross) Height, 26 inches; width, 12 inches

354. PAIR CHIPPENDALE CARVED MAHOGANY AND GREEN LEATHER CLAW-AND-BALL FOOT SIDE CHAIRS

60- With rococo-carved open vasiform splat and scrolled top rail centred with a scallop shell; slip seat in old green leather, on cabriole legs with acanthus-carved knees and claw and ball feet.

355. SHERATON SATINWOOD OCCASIONAL TABLE

English, Late XVIII Century

20- With cockbeaded oblong top, single drawer, and slender square tapering legs, castered. Height, 27 inches; width, 15½ inches

356. GEORGIAN MAHOGANY SMALL WRITING DESK ON CABRIOLE SUPPORTS

30- In two parts; with fitted interior, hinged slant flap, and one drawer. (Lewis) Height, 37 inches; width, 16 inches

357. PAIR SHERATON INLAID SATINWOOD POLE SCREENS

English, XIX Century

Composed of slender shaft on square base, supporting shield-shaped panel framing mezzotint engravings of children, in colors. (Norcross)

Height, 5 feet 2 inches

50-

358. NEST OF THREE SHERATON SYCAMORE TEA TABLES

Graduated oblong tops, cockbeaded, and resting on scrolled X-form supports; lemon yellow patina, resembling satinwood.

Height, 29 inches; width, 22 inches

30-

359. SHERATON INLAID MAHOGANY TRIPOD TABLE

English, Late XVIII Century

Oval top inlaid with a shell medallion in light sycamore; on black and gold decorated tripod with peg feet. (Norcross)

Height, 28 inches; width, 27 inches

22 1/2

360. GEORGE III MAHOGANY DISH-TOP TILTING TABLE

English, XVIII Century

Circular dish top tilting on vase-turned round column, and arched tripod with snake feet.

Height, 27 1/2 inches; diameter, 22 inches

30-

361. REGENCY ROSEWOOD WORK TABLE

English, circa 1820

Oblong top with two rounded drop leaves, and single fitted drawer; on slender baluster-turned legs and high incurvate supports, castored. Rosewood of exceptionally fine figure.

Height, 29 1/2 inches; length open, 35 inches

65-

- 35- 362. SMALL GEORGIAN GILDED CONVEX MIRROR *English, circa 1800*
The molded circular frame crested with a spread eagle.
Height, 29 inches; width, 17 inches

- 70- 363. GEORGE III MAHOGANY BACHELOR'S CHEST *English, XVIII Century*
Small case of four beaded drawers, above which is a hinged folding leaf;
on bracket feet. (*Lewis*)
Height, 31 inches; width, 31 inches

- 85- 364. GEORGE III MAHOGANY SWELL-FRONT CHEST OF DRAWERS *English, XVIII Century*
With three cockbeaded long drawers having oval brasses and bail handles,
valanced skirt with French feet. Dark patina.
Height, 30 inches; length, 36 inches

- 110- 365. HEPPLEWHITE INLAID SATINWOOD 'BEAU BRUMMEL' *English, XVIII Century*
Gentleman's folding dressing cabinet of rectangular form; the top composed
of two hinged flaps which open, revealing a rising mirror on hinged strut,
and numerous compartments and divisions. Four drawers in front;
standing on square tapered legs with brass feet. (*Norcross*)
Height, 32½ inches; width, 27½ inches
[See illustration]

- 40- 366. HEPPLEWHITE INLAID SATINWOOD CABINET TABLE *English, XVIII Century*
Probably a collector's table, with hinged top rising to reveal a series of
divisions; standing on square tapered legs with stretchers. (*Norcross*)
Height, 28¼ inches; width, 24 inches



[NUMBER 365]

CHELSEA PORCELAIN CANDLESTICKS: NUMBER 245

- 230- 367. GEORGIAN MAHOGANY AND TOOLED LEATHER PEDESTAL DESK
Oblong top covered in tooled brown leather, knee-hole front surrounded by nine cockbeaded drawers with ring handles.

Height, 28½ inches; length, 47 inches

[See illustration]

- 45- 368. GEORGIAN MAHOGANY CANTERBURY *English, circa 1810*
Four-division repository for magazines or folios; a drawer in the lower part.

Height, 21 inches; width, 18 inches

- 30- 369. NEST OF FOUR SHERATON MAHOGANY TEA TABLES
With graduated oblong tops and slender round supports, on trestle feet.

Height, 30½ inches; width, 19½ inches

- 60- 370. CARVED MAHOGANY AND NEEDLEPOINT RIBBON-BACK ARMCHAIR
AND SIDE CHAIR *Chippendale Style*

Bow-shaped acanthus-carved top rail surmounting a tasseled ribbon-carved wheel splat; scrolled arms terminating in carved eagle heads; slip seats in *tête de nègre* floral needlepoint with *petit point* figures of birds, on leaf-carved cabriole legs with claw and ball feet.

- 35- 371. CARVED MAHOGANY AND NEEDLEPOINT RIBBON-BACK ARMCHAIR
Chippendale Style

Open rocaille-scrolled back with interlaced ribbon splat hung from a tasseled bowknot; acanthus-voluted open arms, slip seat similar to the preceding, on acanthus-carved cabriole legs with claw and ball feet.

- 35- 372. QUEEN ANNE PARCEL-GILDED MAHOGANY WALL MIRROR
English, XVIII Century

Molded and arched frame with fret-carved crest embellished with gilded acanthus ornament; retaining original beveled glass. Rare. (*Norcross*)

Height, 30¼ inches; width, 13 inches



[NUMBER 367]

CHELSEA-DERBY PORCELAIN GROUPS: NUMBER 257

- 125- 373. HEPPLEWHITE INLAID SATINWOOD CABINET *English, XVIII Century*
 Upper part with shelves enclosed by a pair of glazed doors; surmounting
 a table with one drawer and six square tapered legs with spade feet.
 (Norcross) *Height, 5 feet 10 inches; width, 30½ inches*

[See illustration]

- 15- 374. HEPPLEWHITE INLAID SATINWOOD PIER TABLE *English, XVIII Century*
 Bow-shaped top, frieze, and square tapered legs banded with rosewood
 and other woods. *Height, 30½ inches; length, 56½ inches*

- 110- 375. SHERATON MAHOGANY SWELL-FRONT CHEST OF DRAWERS *English, Late XVIII Century*
 With convex front containing two small and three long cockbeaded
 drawers with oval patera brasses and bail handles; on French feet.
 Veneered with crotch mahogany of good color.
Height, 40½ inches; length, 41 inches

- 25- 376. GEORGIAN PAINTED BEECHWOOD PIVOTING WING CHAIR *English, XVIII Century*
 Upholstered and covered in figured golden yellow bourrette; pivoting on
 the frame and square tapered legs. Paint chipped off in places.
 (Norcross)

- 30- 377. CHIPPENDALE MAHOGANY UPHOLSTERED LOVE SEAT
 Covered in golden yellow fabric; on mahogany grooved square legs
 braced with fretted stretchers. (Norcross) *Length, 4 feet 5 inches*

- 225- 378. MAHOGANY TWO-PART PEDESTAL DINING TABLE *Sheraton Style*
 Comprising a pair of rounded oblong consoles with reeded edges, on
 vase-turned pedestals and quadrangular reeded and flaring legs shod
 with brass claws and casters. With two extension leaves.
Height, 29½ inches; length, 5 feet 3 inches,
extending to 7 feet 11 inches; width, 46 inches

- 40- 379. SHERATON MAHOGANY SMALL PEMBROKE TABLE *English, XVIII Century*
 Oval top with two hinged leaves; supported on four square tapered
 legs; one drawer. (Norcross) *Height, 28 inches; length, 29 inches*



[NUMBER 373]

380. PAIR SHERATON INLAID MAHOGANY KNIFE BOXES

English, XVIII Century

With hinged slant top contained by a border of banding, the front stiles inlaid with mock flutings; inlaid and fitted interior. A choice original pair.

Height, 14½ inches

[See illustration]

381. SHERATON INLAID MAHOGANY SERPENTINE-FRONT SIDEBOARD

English, Early XIX Century

With crossbanded top and sharply serpentine front broken over the pilasters; two concave-fronted bottle drawers flank two convex central drawers, the lower recessed to simulate a knee-hole; square tapering legs with spade feet. Paneled with stringing, and with crossbanded edges.

Height, 37 inches; length, 50 inches

[See illustration]

382. HEPPLEWHITE INLAID SYCAMORE SEWING TABLE

Octagonal hinged top; furnished with blue satin sewing bag; on slender flaring supports with X-stretcher. (*Norcross*)

Height, 30½ inches; width, 17½ inches

383. INLAID WALNUT KNEEHOLE WRITING DESK *Queen Anne Style*

Banded oblong top, knee-hole front with recessed cupboard surrounded by a long drawer and six small drawers, all veneered with panels of elm-root (or thuyawood) banded in walnut, and having strapwork brasses and bail handles.

Height, 30½ inches; width, 30 inches

384. GEORGIAN MAHOGANY TALL-CASE CLOCK

Bircley, Halifax, circa 1820

Commodious case of crotch mahogany, the arched metal dial painted with female figures emblematic of the Seasons. As exhibited.

Height, 7 feet 2 inches

385. GEORGE III MAHOGANY THREE-TIER DUMBWAITER

English, Late XVIII Century

Three graduated circular dish-top trays, joined by a round central column with reeded vase turning; on arched tripod with snake feet.

Height, 45 inches; diameter, 23 inches

386. SHERATON MAHOGANY PEMBROKE TABLE *English, circa 1800*

Oblong top with two segmental drop leaves, single end drawer, graceful round tapering legs with casters.

Height, 28 inches; length open, 44 inches



[NUMBERS 380 AND 381]

387. GEORGIAN CARVED AND PARCEL-GILDED MAHOGANY
OVER-MANTELED MIRROR

Three-section mirror embellished with festoons of bay, and crested with a fluted urn. (*Wadsworth*) Height, 35 inches; length, 59 inches

15-

388. CHIPPENDALE CARVED MAHOGANY TRIPOD TABLE

English, XVIII Century

Tilting circular top of nicely figured light mahogany; supported on a pedestal of cluster column pattern springing from a leaf-carved tripod with shell-carved feet. Height, 28 inches; diameter, 28½ inches

50-

[See illustration]



[NUMBER 389]



[NUMBER 388]

GEORGIAN TEA CADDY: NUMBER 318

389. PAIR HEPPLEWHITE CARVED MAHOGANY SIDE CHAIRS

English, XVIII Century

Slightly arched square back with triple ostrich feather splat; shaped seat in green velours; molded square tapered legs.

45-
[See illustration of one]

390. REGENCY ROSEWOOD BOOK STAND

English, Early XIX Century

A three-tier whatnot with open sides railed in by turned spindles, and a drawer in base; gadrooned mushroom feet, casters.

55-
Height, 36 inches; width, 18 inches

391. SHERATON MAHOGANY SPIDER-LEG DROP-LEAF TABLE

English, circa 1810

40-
Folding table with plain rectangular top supported on slender gated legs and stretchers.

Height, 28½ inches; length open, 32½ inches

392. HEPPLEWHITE INLAID SATINWOOD CONSOLE TABLE

17 1/2
Segmental top, frieze, and square tapered legs banded with rosewood and other woods. (*Lewis*)

Height, 32 inches; length, 39 inches

393. SHERATON MAHOGANY AND TOOLED LEATHER DRUM TABLE

140-
Circular drum top covered in red leather gilt-tooled with *fleurs de lis*, the frieze with four drawers; on ring-turned vasiform support, and three flaring reeded legs, shod with brass claws and casters.

Height, 31 inches; diameter, 38 inches

394. SHERATON INLAID MAHOGANY KIDNEY-SHAPED TABLE

English, circa 1800

30-
Shaped top banded with sycamore; supported on slender uprights with splayed base, a drawer in front. (*Chamberlain*)

Height, 29 inches; length, 37 inches

- 90- 395. SHERATON INLAID MAHOGANY SIDEBOARD *English, circa 1800*
 Shaped front containing two deep bottle drawers flanking two shallow drawers; drawers banded with satinwood and furnished with brass lion's-mask-and-ring handles. Standing on six round tapered and reeded legs.
Height, 36 inches; length, 6 feet

[See illustration]

- 30- 396. CHIPPENDALE CARVED MAHOGANY DROP-LEAF TABLE *English, XVIII Century*
 Square table with two hinged leaves and one drawer; on four leaf-carved cabriole legs with leonine feet. (*Wadsworth*)
Height, 28 inches; length open, 42½ inches

- 165- 397. SHERATON MAHOGANY AND TOOLED LEATHER WRITING TABLE *English, XVIII Century*
 With reeded oblong top inset with tooled brown leather of later date, and three drawers with brass bail handles; on round reeded and tapering legs surmounted by carved dies. The legs and stiles are recarved.
Height, 30 inches; length, 53½ inches

- 70- 398. SET OF FOUR LATE SHERATON PAINTED BEECHWOOD SIDE CHAIRS *English, circa 1810*
 Slightly canted square back and round tapered legs painted with neo-classic ornamentation; caned seat furnished with blue figured linen cushion. (*Norcross*)

- 150- 399. PAIR INLAID WALNUT BACHELOR'S CHESTS *Queen Anne Style*
 With oblong hinged top and front with four long cockbeaded drawers, all with herringbone borders enclosing panels of figured wood; engraved bat's-wing brasses.
Height, 29 inches; length, 30 inches

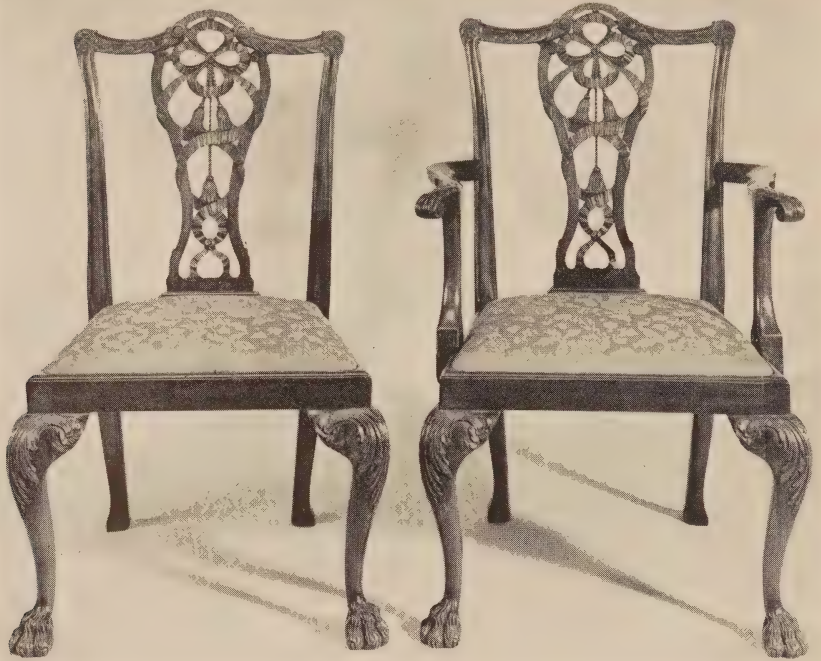
- 35- 400. GEORGIAN MAHOGANY KNEEHOLE DESK *English, XVIII Century*
 Front equipped with seven drawers surrounding a knee space containing a cupboard; a pull-out shelf beneath the top. (*Lewis*)
Height, 31 inches; length, 31½ inches

- 2nd 400A. LATE GEORGIAN CARVED AND GILDED PIER MIRROR *English, circa 1815*
 Columnar frame in architectural style, the frieze with relief allegory of British military accomplishments. Imperfect.
Height, 55 inches; width, 35 inches



[NUMBER 395]

GEORGIAN MAHOGANY BRACKET CLOCK: NUMBER 333



[NUMBER 401]

401. SET OF EIGHT CARVED MAHOGANY CLAW-FOOT DINING CHAIRS

Chippendale Style

160- Comprising two armchairs and six side chairs. Open fan-shaped back with balloon splat finely pierced and carved with a ribbon bowknot hung with tassels; slip seats in crimson worsted floral damask, acanthus-carved cabriole legs with furred lion-paw feet.

[See illustration of two]

402. QUEEN ANNE BURL WALNUT SECRETARY

English, Early XVIII Century

Upper cabinet enclosed by two doors with arched panels; lower part, a slant-front desk with seven drawers in the body and fitted interior of small drawers and pigeonholes. (*Wadsworth*)

Height, 7 feet; width, 40 inches

403. GEORGIAN INLAID MAHOGANY BOW-FRONT CHINA CABINET

With shaped sides enclosing convex-fronted shelves, a double cupboard below paneled with crotch mahogany, with border of ebony stringing.

Height, 56½ inches; width, 25½ inches

404. REGENCY MAHOGANY BOOKCASE

English, circa 1820

Upper part a cabinet of book shelves enclosed by two glazed doors with arched mullions in the Gothic taste, and capped by a lift-off cornice. Lower part containing cupboards and drawers, the centre drawer fitted for writing purposes. On leonine feet.

*Height, 8 feet 7 inches; width, 5 feet 11 inches*405. GEORGIAN MAHOGANY DROP-LEAF TABLE *English, XVIII Century*

Plain oblong top with two hinged leaves, supported on six square tapered legs; one drawer. *Height, 29 inches; length open, 47¾ inches*

406. CARVED MAHOGANY AND OLD GOLD BROCATELLE SOFA

Hepplewhite Style

Arched horseshoe back with armpads, and the seat, covered in fine old gold satin brocatelle patterned with pairs of birds and animals flanking floral palmettes; molded mahogany arm supports and tapering square legs. With small loose cushion. *Length, 6 feet*



[NUMBER 407]

SCULPTURED MARBLE STATUETTES: NUMBER 125

CHARLES I STUMPWORK PICTURE: NUMBER 335

- 160- 407. SHERATON INLAID MAHOGANY SOFA TABLE *English, circa 1800*
 Oblong top, with a hinged leaf at either end; two drawers in front; on
 trestle pattern end supports connected by a spiraled medial stretcher.
Height, 28½ inches; length open, 56 inches

[See illustration]

- 30- 408. GEORGIAN CARVED AND GILDED CONVEX MIRROR WITH
 EAGLE PEDIMENT *English, circa 1815*
 Molded circular frame crested with a spread eagle and two coiled ser-
 pents. Gilding chipped. *Height, 54 inches; width, 39 inches*

- 110- 409. SHERATON SATINWOOD AND BIRCH FOUR-POST CANOPY BEDSTEAD
 Slender turned and tapered foot posts with carved capitals; plain square
 tapered head posts; supporting a slightly arched canopy lined with light
 blue fabric. (*Norcross*) *Height, 6 feet 6 inches; width, 38½ inches*

TAPESTRIES

- 110- 410. BRUSSELS TAPESTRY PANEL *Late XVII Century*
 Depicting a group of ancients before a statue symbolizing the Earth; a
 soldier in the background. Narrow floral border added.
Height, 8 feet 3 inches; width, 46 inches

- 65- 411. AUBUSSON TAPESTRY
 Extensive vista of sunlit landscape with a château in the middle distance,
 from behind which a river winds to the foreground, cascading over low
 rocks; two flamingoes strut in the foreground beside a brick fountain
 at right surmounted by figure of a *couchant* lion. The scene is flanked
 by tall trees, with a heron perched among the branches, and reeds and
 pink peony shrubs beneath.

Height, 10 feet 4 inches; width, 7 feet 4 inches

412. FLEMISH RENAISSANCE TAPESTRY

Late XVI Century

THE QUEEN OF SHEBA BEFORE SOLOMON. The monarch with crown and sceptre, wearing a fawn cloak carelessly draped over his armor, is seated at left upon a canopied throne surmounted by angel finials, beside him a general in plumed helmet, grasping his sabre. From the right approaches the Queen, sumptuously robed in brocaded sapphire blue garments, her hand outstretched in greeting, and followed by three ladies-in-waiting, one carrying a casket. In the background troops of cavalry pass a colonnaded temple. Shaded tan border woven with blue strap-work supporting urns and clusters of fruit and foliations, herms, masks and other Renaissance motives, centring cartouches with allegorical figures, the side vignettes having caryatid and telamon supporters. Woven in fine wools with lavish highlights of silk. (*N. Y. Private Collector*)

Height, 11 feet 2 inches; width, 10 feet 4 inches

[See illustration]

412A. BRUSSELS TAPESTRY

Late XVII Century

MARCUS AURELIUS COMMENDS HIS SON TO THE PHILOSOPHER. The Emperor stands at right clad in blue garment and fawn cloak, upon a dais beneath a fawn canopy, gesturing toward his young son Commodus. At left is the figure of the grave philosopher, a young student beside him. Fawn border finely woven with swags and pendants of flowers supported by nude amors, with perched parrot and heron; the top border with a cartouche of garlanded torches and horns, and in the lower border a midnight blue plaquette with caption. (*Hack*)

Height, 10 feet 10 inches; width, 8 feet



[NUMBER 412]



[NUMBER 413]

413. BRUSSELS LATE RENAISSANCE TAPESTRY *Circa 1625*
 DIANA AND CUPID. Full-length seated figure of the goddess in pale blue and yellow robes, holding a bow in her left hand and caressing with her right the submissive Cupid; beneath an elaborate Renaissance canopy of leaf scrollings surrounded by drapery festoons, urns of fruit and flowers, animal masks and foliage. Fawn border with figures of amors alternating with large clusters of fruit and, in the upper and lower borders, cartouches flanked by shell motives. Woven in fine wools, heavily enriched with silk. Lower border restored.

Height, 10 feet 11 inches; width, 8 feet

Collection of Genevieve Garvan Brady, New York, 1937

[See illustration]

414. PAIR AUBUSSON TAPESTRY CANTONNIÈRES
 Silk-woven tapestry designed with swags of flowers and leaf volutes in pastel colors in a light ground. Crowned cipher TH in upper border.

Height, 13 feet 9 inches; width, 8 feet 7 inches

IMPORTANT RUGS, INCLUDING
 ENGLISH AND SPANISH HAND-TUFTED CARPETS
 AND KASHAN SILK RUGS

415. TWO BOKHARA RUGS
 Patterned with scarlet octagons outlined with blue and green latchhooks, in a wine red field. (*August*)

Length, 5 feet 3 inches; width, 2 feet 8 inches

Length, 5 feet; width, 3 feet 2 inches

416. TABRIZ SILK RUG MEDALLION
 Circular medallion surrounded by twelve scallops with an allover floral pattern in orange and ivory, outlined in deep blue. Rich lustrous pile. (*Rost*)

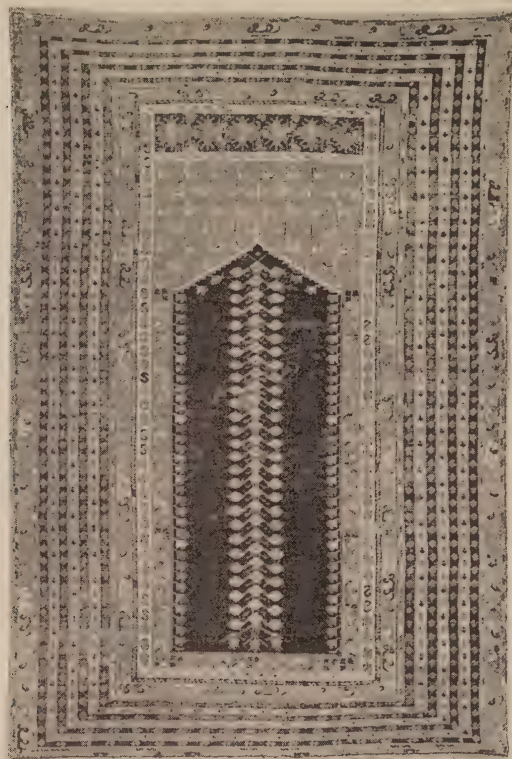
Diameter, 5 feet 6 inches

417. ANTIQUE MESHED KHORASSAN CYPRESS RUG
 Woven with a blue cypress flanked by *affrontés* figures of peacocks and scrolling blue floral branches in a cartouche-shaped fawn field with deep blue spandrels; rosy fawn border with pairs of bird figures. (*N. Y. Private Collector*)

Length, 5 feet 10 inches; width, 3 feet 8 inches

418. KASHAN SILK BIRD RUG
 Oyster white field woven in crimson, blue and tan with an urn and 'Trees of Life' enlivened with birds, beneath a scrolled arch with bronze and tan floral spandrels; wine red border of blossoms and palmettes. (*August*)

Length, 6 feet 10 inches; width, 4 feet 7 inches



[NUMBER 419]

419. KULAH PRAYER RUG

XVIII Century

Narrow sapphire blue mihrab with pointed arch and turquoise field *semé* with russet leaves; *tête de nègre* and old gold dotted stripe borders.
(N. Y. Private Collector)

100-

Length, 6 feet 4 inches; width, 4 feet 1 inch

[See illustration]



[NUMBER 420]

420. IMPERIAL HEREKE GOLD-WOVEN SILK RUG

Fawn field, woven with an all-over design of skeleton cartouches of red carnations amid arabesques of lotus branches; deep greenish blue border with scrolling stems of lotus flowers, violets and jasmine, some with bifurcate stems voided in gold thread. Exceptionally fine weave, with about 600 knots to the square inch. (N. Y. Private Collector)

Length, 5 feet 6 inches; width, 3 feet 3 inches

[See illustration]



[NUMBER 421]

421. SAROUK RUG

140- Woven on a scarlet field with an allover design of arabesqued branches in green and white, enclosing lotus blossoms and clusters of tiny white jasmine; midnight blue border of interlaced floral garlands. A good semi-antique rug.

Length, 10 feet; width, 7 feet

[See illustration]

422. KULAH PRAYER RUG

Late XVIII Century

Sapphire blue mihrab *semé* with tiny fawn blossoms, with two sky blue colonnettes supporting a pointed arch scattered with tiny red and tan jardinières; numerous dotted stripe guards. (N. Y. Private Collector)

Length, 5 feet 10 inches; width, 4 feet 1 inch

90-

423. BIJUR RUG OF KARABAGH DESIGN

Woven on a hexagonal midnight blue field with a Karabagh 'French' design of sky blue and green leaf-scrolled cartouches with clusters of peonies; gray floral border. (N. Y. Private Collector)

Length, 6 feet 11 inches; width, 4 feet 7 inches

45-

424. TEKKE BOKHARA RUG

Field of deep blood red woven with seven chains of particolored camel's-foot octagons or *gul*, alternating with latchhooked cruciform motives; repaired. A semi-antique rug of fine quality.

Length, 8 feet 5 inches; width, 5 feet 10 inches

115-

425. ANTIQUE BAKU RUG

Woven on a blue-black ground with rows of large infloretted 'pears' centring a stepped cruciform fawn medallion; border of 'barberpole' stripes with crimson and blue guards. (N. Y. Private Collector)

Length, 9 feet 2 inches; width, 3 feet 11 inches

80-

426. ANTIQUE DAGHESTAN BIRD RUG

Woven on a midnight blue ground with four eight-pointed stellate medallions in old scarlet, blue, and ivory, flanked by pairs of formalized bird figures amid a multitude of tiny scattered ornaments; latchhook border. (N. Y. Private Collector)

Length, 9 feet 4 inches; width, 3 feet 10 inches

55-



[NUMBER 427]

427. FINE KASHAN SILK FLOWER-GARDEN CARPET

475
The field is divided into a mosaic of variously shaped plots with grounds of rose pink, sapphire blue, emerald, old gold, yellow and ivory, each woven with a vase of cluster of peonies, lotus, roses, carnations, and other variegated blossoms in a multitude of colors, centring a scalloped rose pink floral medallion; greenish ivory border bearing vines of lotus flowers and smaller pink blossoms, overlaid by crimson and blue arabesques. (*August*) *Length, 12 feet 9 inches; width, 8 feet 9 inches*

[See illustration]



[NUMBER 428]

428. IMPORTANT KASHAN SILK MOSQUE CARPET

375- Cartouche-shaped field of the sacred green of the Prophet, overrun with a multitude of trailing creepers bearing rose, blue, yellow and other blossoms, and centring three concentric scalloped medallions in canary yellow, sapphire blue and crimson; the edges of the field and spandrels with floral ornament in a crimson ground. Sapphire blue border with a chain of floral cartouches woven in colors of the field, the golden yellow guards reserved with small cartouches of flowers and birds. (*August*)

Length, 13 feet 9 inches; width, 9 feet

[See illustration]

429. ANTIQUE HERAT CARPET

400- Field of midnight blue covered by a close Herati design with a scarlet trellis bearing blossoms and particolored scarlet and sky blue curving leaves; rose scarlet border of red and green 'turtle' palmettes outlined in deep greenish blue, mounted on interlaced branches; six floral guards. A fine early specimen. (*N. Y. Private Collector*)

Length, 18 feet; width, 7 feet 5 inches

[See illustration]

430. AUBUSSON RUG

55- Ivory field *semé* with sprigs of flowers painted at later date, and centred with a pastel-colored floral nosegay; within a border of bowknotted festoons of pink and white blossoms.

Length, 9 feet 6 inches; width, 6 feet 5 inches

431. ANTIQUE CHINESE RUG

50- Light fawn field occupied by Shou medallion, fret ornament, and flower arabesques in dark blue; framed in two borders of fret and meanders in similar colors. (*Chamberlain*)

Length, 8 feet 11 inches; width, 6 feet 10 inches

432. KIRMAN PALMETTE CARPET

140- Mazarine blue field woven in pastel shades of light blue, green and fawn with rows of lotus and peony palmettes supported on branches bearing masses of smaller blossoms; fawn border of cusped and interlaced floral branches.

Length, 14 feet; width, 7 feet 2 inches

433. MAHAL FEREGHAN GULAI HINNAI CARPET

190- Hexagonal midnight blue field with ivory spandrels, closely woven with a floral lattice pattern enclosing clusters of henna flowers, principally in light blue, rose and ivory; fluctuating terra cotta floral border.

Length, 15 feet; width, 13 feet 4 inches



[NUMBER 429]

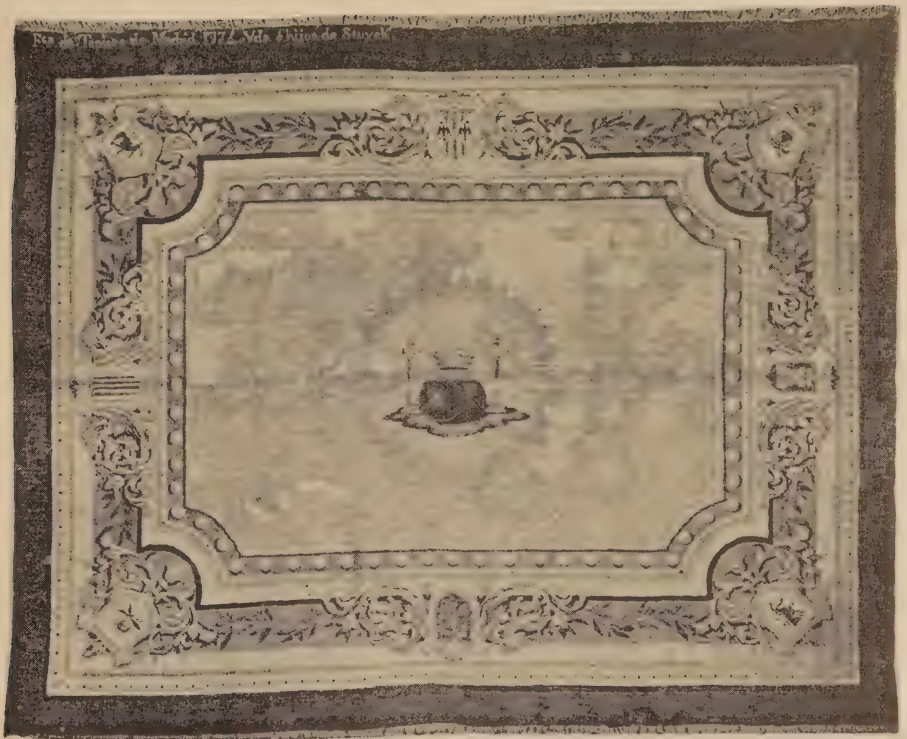
434. RARE CHARLES III MADRID ARMORIAL CARPET

Viuda de Stuyck, 1774

450-
Field of sky blue scattered with stars and white clouds, and centred with a circular golden glory upon which appear the two blue hemispheres surmounted by a crown and the motto: PLUS ULTRA; the whole within a rose red frame of pearl motives, invected at the corners. Rose border with trailing green bay leaves and bearing eight escutcheons with arms of the Spanish provinces, flanked by golden dragon scrollings. Some repairs, skilfully effected. Outer border of sage green inscribed: FCA. DE TAPICES DE MADRID. 1774. VDA. É HIJOS (widow and sons) DE STUYCK.

Length, 16 feet 8 inches; width, 13 feet

[See illustration]



[NUMBER 434]

435. HERIZ PALACE CARPET

425- Field of beautiful turquoise blue color, centred with a large tawny red floral medallion hung with pendants of blossoms and russet foliage, the corners with quarter-round medallions woven with floral arabesques in a ground of burnt orange. Broad tawny red floral border enclosed by turquoise blue and tan guards. A semi-antique carpet. (*N. Y. Private Collector*)

Length, 25 feet 2 inches; width, 17 feet 3 inches

[See illustration]



[NUMBER 435]

436. IMPORTANT GEORGE III HAND-TUFTED MEDALLION CARPET

Circa 1815

120- A handsome large carpet of the Regency period, with shell pink field centred with a large Empire medallion, principally in magenta and orange, and garlanded with eight festoons of garden flowers and olive brown foliage, surrounded by four nosegays of blossoms at the corners; the whole framed in floral festoons similar to the medallion garlands. Gray border with crimson and bronze leaf cartouches entwined with trailing blossoms. *Length, 20 feet 6 inches; width, 15 feet 8 inches*

[See illustration]



[NUMBER 436]



[NUMBER 437]

437. KURD ARABESQUE CARPET OF IMPORTANT SIZE

Midnight blue ground woven with a latticework of stiff branch arabesques bearing blossoms and enclosing clusters of jasmine, hyacinths, and other small flowers, in shades of scarlet, green, brown and fawn; fawn border of palmettes enclosed by old scarlet guards. A semi-antique carpet. (N. Y. Private Collector)

Length, 31 feet 1 inch; width, 16 feet 7 inches

[See illustration of part]

438. KASHANOR CARPET WITH KARABAGH DESIGN

Woven on a midnight blue ground with an allover Karabagh 'French' design consisting of shaded sky blue leaf-scrolled cartouches, each bearing three red and fawn roses; fluctuating greenish blue border of interlinked rosettes and lotus palmettes. Close heavy pile.

Length, 18 feet 7 inches; width, 11 feet 9 inches

From Kent-Costikyan, Inc., New York

439. BERLIN CRIMSON TUFTED CARPET

Woven *en camaïeu* with a border of leaf scrollings and urns. (August)

Length, 14 feet 6 inches; width, 9 feet 10 inches

ENGLISH FURNITURE AND DECORATIONS

[CONCLUDED]

440. CHIPPENDALE MAHOGANY WING CHAIR IN STRIPED BASKET CLOTH

With deep back and wings, scrolled sides and seat cushion, all covered in magenta and white striped fabric; on stretched square legs, casters.

441. INLAID MAHOGANY SIDEBOARD WITH SHAPED FRONT

Colonial Hepplewhite Style

Commodious piece equipped with drawers and cupboards and decorated with light wood inlay. (Wadsworth)

Height, 40 inches; length, 6 feet 5 inches

- 300- 442. INLAID MAHOGANY AND SATINWOOD THREE-PART PEDESTAL
EXTENSION DINING TABLE *Sheraton Style*
Comprising a rectangular centre section, and two rounded ends, all banded in satinwood and finished with a reeded edge; tilting on vase-turned supports and reeded incurvate legs shod with brass claws and casters. With two extension leaves.

Height, 29½ inches; length, 8 feet, extending to 11 feet; width, 44 inches

[See illustration]

- 210- 443. FLEMISH TAPESTRY THREE-FOLD SCREEN *XVIII-XIX Century*
Depicting two figures of shepherdesses in the foreground of a valley, with tall trees at left and right; *tête de nègre* floral border.

Height, 7 feet 9 inches; length, 7 feet 10 inches

- 25- 444. SANTO DOMINGO MAHOGANY BOOKCASE *American, circa 1830*
Upper part a bookcase enclosed by two glazed doors; lower part a cupboard enclosed by two doors with drawer above.

Height, 7 feet 4½ inches; width, 46 inches

- 55- 445. CARVED AND UPHOLSTERED MAHOGANY LOVE SEAT *Chippendale Style*
Covered in ribbed fawn velours; richly carved cabriole legs, and claw and ball feet. Two cushions. *Length, 53 inches*

- 30- 445A. TURNED WALNUT AND JACQUARD TAPESTRY SETTEE *William and Mary Style*
Back, seat cushion, and arms in machine tapestry simulating seventeenth century needlepoint, designed with panels of figures in a garden. (*Lewis*) *Length, 5 feet 3 inches*

- 40- 446. CARVED OAK DRAW-TOP TABLE *Jacobean Style*
Oblong top with two draw leaves; frieze carved with *fleurdelisé* lunettes, on T-shaped end supports with baluster-turned and blocked legs.

Height, 30½ inches; length, 8 feet extending to 14 feet 8 inches



[NUMBER 442]

447. SHERATON INLAID MAHOGANY SECRETARY BOOKCASE

English, Late XVIII Century

Upper part a case of book shelves enclosed by a pair of glazed doors with shaped mullions; below the doors is a cupboard enclosed by a door. Lower part equipped with a writing drawer and three long drawers. All banded with light wood inlay, including the lift-off cornice.

Height, 7 feet 8 inches; width, 43 inches

[See illustration]

448. DECORATED CORDOVA LEATHER FOUR-FOLD SCREEN

Late XVII Century

40- Panels with a recurrent design of Bérainesque canopied cartouches ornamented with flowers and leaf scrollings, and centred with the figure of an angel, in subdued and bronze gilding.

Height, 5 feet 6 inches; length, 7 feet

449. WALNUT AND OAK BOOKCASE IN THE WILLIAM AND MARY TASTE

22¹⁰ Low bookcase enclosed by four glazed doors, and having decorated frieze. (*Lewis*)

Height, 46 inches; length, 6 feet 3 inches

450. WALNUT AND OAK BOOKCASE IN THE WILLIAM AND MARY TASTE

22¹⁰ Companion to the preceding. (*Lewis*)

Height, 46 inches; length, 6 feet 3 inches

451. EMPIRE INLAID MAHOGANY SOFA

American, circa 1820

17¹⁰ Shaped frame banded with brass inlay; resting on leonine feet. Covered in blue silk machine tapestry. (*Chamberlain*)

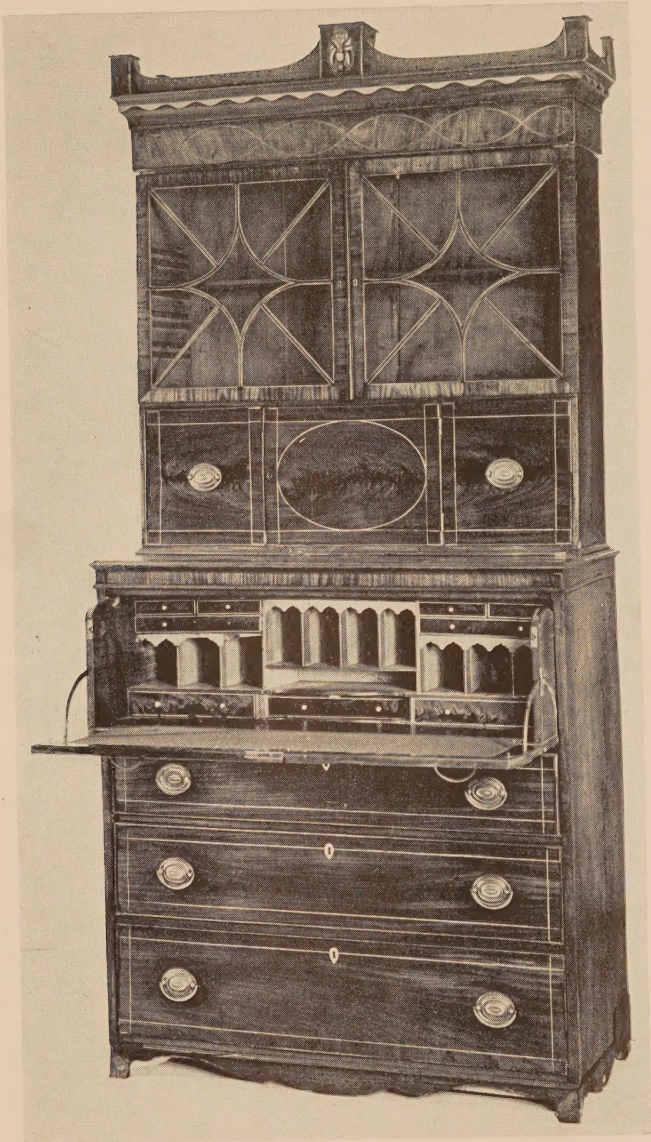
Length 6 feet 2 inches

452. PANELED WALNUT WRITING CABINET

Charles II Style

52¹⁰ Well made piece with two doors, writing drawer, and plain drawer in front; on turned legs with stretchers. (*Lewis*)

Height, 5 feet; width 41 inches



[NUMBER 447]

22¹² 453. WALL MIRROR INSET WITH OIL PAINTING *Georgian Style*
 Frame painted black and gold; square mirror surmounted by a decorative landscape painting. Together with a walnut canterbury. [Lot.]
 (August) *Height, 43 inches; width 27½ inches*

17¹⁰ 454. MAHOGANY FOLIO RACK, AND AN OCCASIONAL TABLE
 Print folio rack of *cheval* type, with brass feet. Kidney-shaped occasional table in the Sheraton style. [Lot.] (*Lewis*)

10- 455. GEORGIAN CARVED MAHOGANY CANDLESTAND
 Shaped dish top on grooved shaft and carved tripod. Together with a nest of three glass-top mahogany small tables. [Lot.] (*Norcross*)

12¹⁰ 456. CARVED MAHOGANY BEDSIDE TABLE, BUREAU, AND CORNER CHAIR *American, XIX Century*
 Bedside table with cupboard front and carved pilasters. Narrow bureau *en suite*. Corner chair in Chippendale style, with linen seat. [Lot.]
 (*Lewis*)

25- 457. PAIR MAHOGANY KNIFE URNS *English, XIX Century*
 Tapering octagonal urn with slotted interior, the cover with acorn finial. *Height, 26 inches*

22¹² 458. GILDED AND FESTOONED OVERMANTEL MIRROR *Adam Style*
 Arched frame crested with a cluster of amatory emblems. (*Lewis*)
Height, 50 inches; width, 40 inches

30- 459. FOUR OLD ENGLISH COLOR PRINTS
 Foxhunting subjects: Going Out of Kennel; Crossing the River Avon; Finding in a Bog; Consequences. Folio. Framed. (*Wadsworth*)

10- 460. PAIR SAMSON DECORATED PORCELAIN JARDINIERS
 Decorated in the colors of the *famille verte* with panels of flowers of the seasons and 'precious objects' in an ivory yellow ground. (*Lewis*)
Diameter, 18 inches

\$ 18.495-

[END OF SALE]

Total \$ 32.166⁵⁰

PARKE-BERNET GALLERIES • INC

*designs its catalogues and directs
all details of illustration, text
and typography*